

Natural resource planning in Metsähallitus

Kirsi-Marja Korhonen

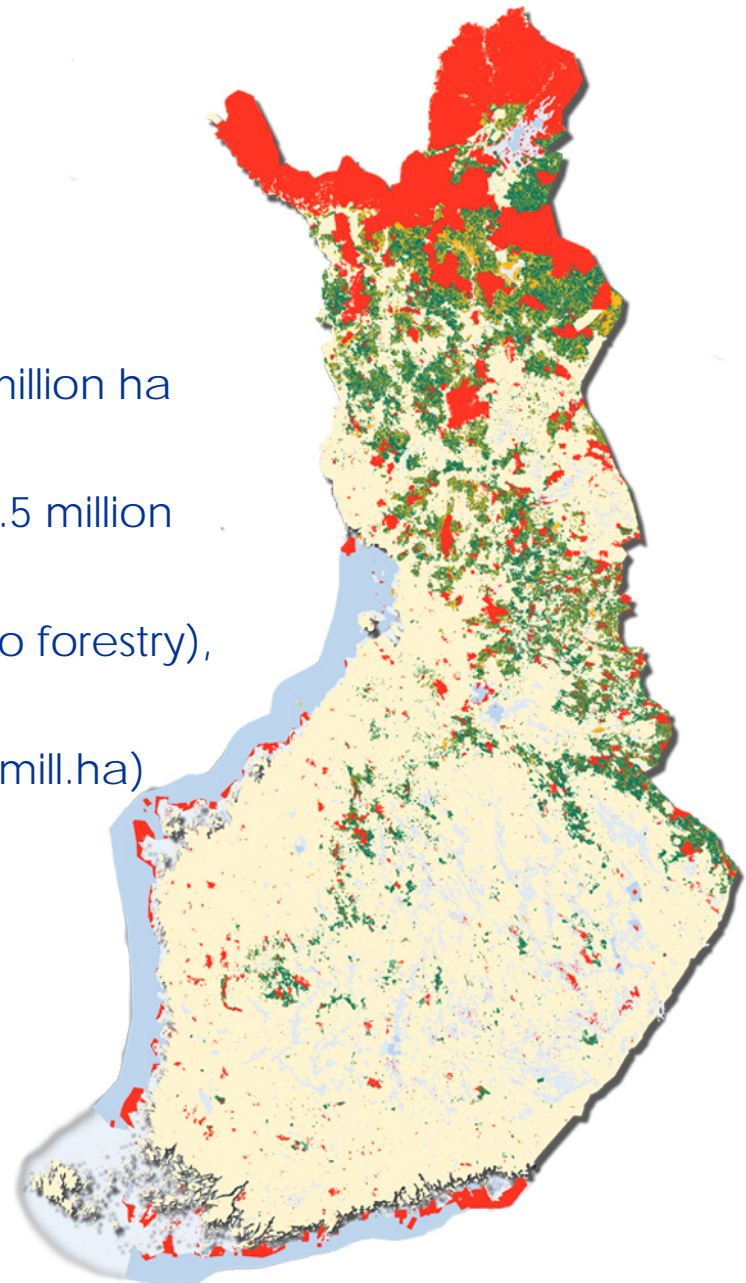
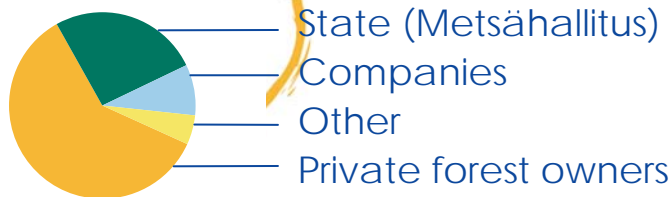
FOREST RECREATION & TOURISM SERVING URBANISED
SOCIETIES, 28-31 MAY 2008, HÄMEENLINNA, FINLAND



Metsähallitus lands and waters

- Forest land in managed forests, 3.5 million ha (Lapland 1,9 mill. ha)
- Low productive lands (no forestry), 1.5 million ha (Lapland 1,0 mill. ha)
- Protected areas, wilderness areas (no forestry), 4.0 million ha (Lapland 3,3, mill. ha)
- Land area 9 million ha (Lapland 6,2 mill. ha)
- Water areas, 3.4 million ha

Ownership of forest land in Finland

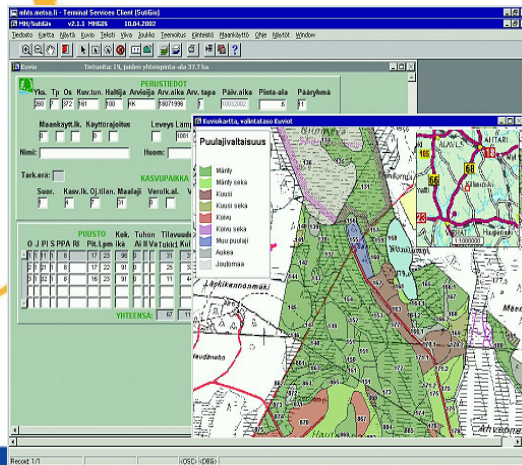


Making use of the best available technology

- Logging and transport planning, optimization and management via information network

- Same GIS map components used with

- *forestry information systems*
- *logistics applications*
- *timber trucks, harvesters, etc.*
-

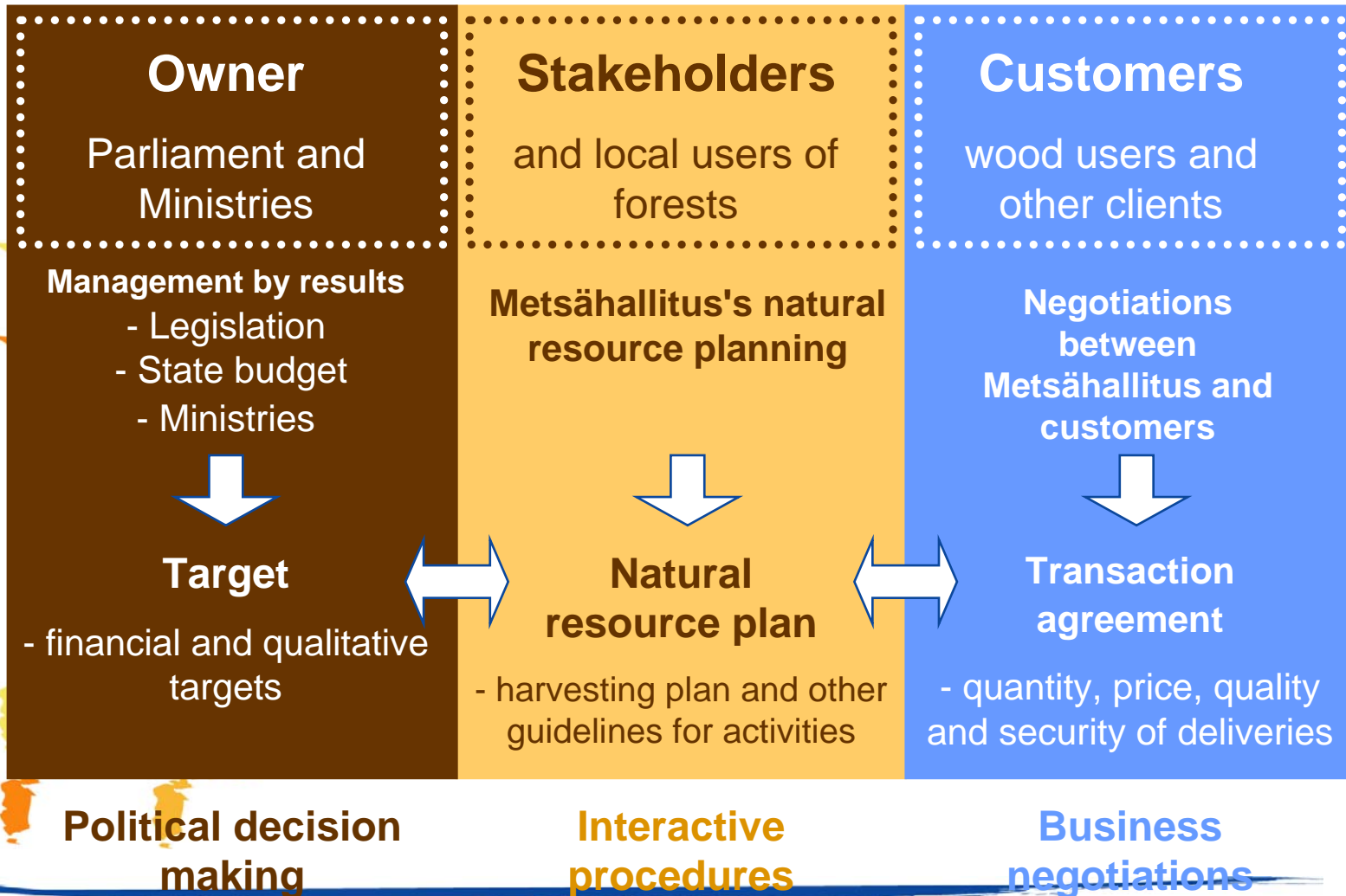


Land-use planning in Finland

- The Ministry of Environment is in charge of planning for the network of protected areas in Finland. The network is very good in Lapland and other regions where state forests cover a significant proportion of the land area.
- Statutory land-use planning consists of regional development plans and communal land-use plans in which forestry areas are also defined. These plans, which include all lands, are made by municipalities and counties, and decided by locally elected communal boards.
- In addition to these, Metsähallitus has adopted voluntary Natural Resource planning to combine the various targets and stakeholder views concerning sustainable use of the state forests.



From natural resource planning to timber sales



Stakeholder participation

***Open co-operation** is a central element in natural resource planning, using regional co-operation groups, local meetings and other public participation methods.*

Open stakeholder meetings

-more than 120 invitations sent out in Lapland to different stakeholder groups

-participants elect the representatives to co-operation groups

Eg. hiker's organisation, scouts, orienteering clubs could be classified as Recreational Interest Group which selects their representative to the group

***Co-operation groups:** representatives of the main stakeholders: reindeer co-operatives, ENGOs, tourism and wood processing companies, local hunters and other recreation, workers' unions, municipalities and other administration, etc.*

Independent chair person



The task of the co-operation group

- To analyse the results of the previous term (5 yrs) and current situation
- To define review criteria and indicators to measure them
- To define alternative planning options with various focal areas
- To select one planning option or a combination of several on the basis of the chosen indicators, aiming for a balanced consensus



Independent, Self-Steered and Neutral Process

- The outcomes of the alternative strategies are processed and analysed using mainly MELA software. MELA-software is developed, updated and delivered by Finnish Forest Research Institute.
- Various **decision support tools** are made available for the working group. These include alternative – indicator matrix, various voting methods, mesta-method, etc. The working group makes the decision which of these tools are applicable, or they can reject them all and aim at consensus only by discussions and negotiations.

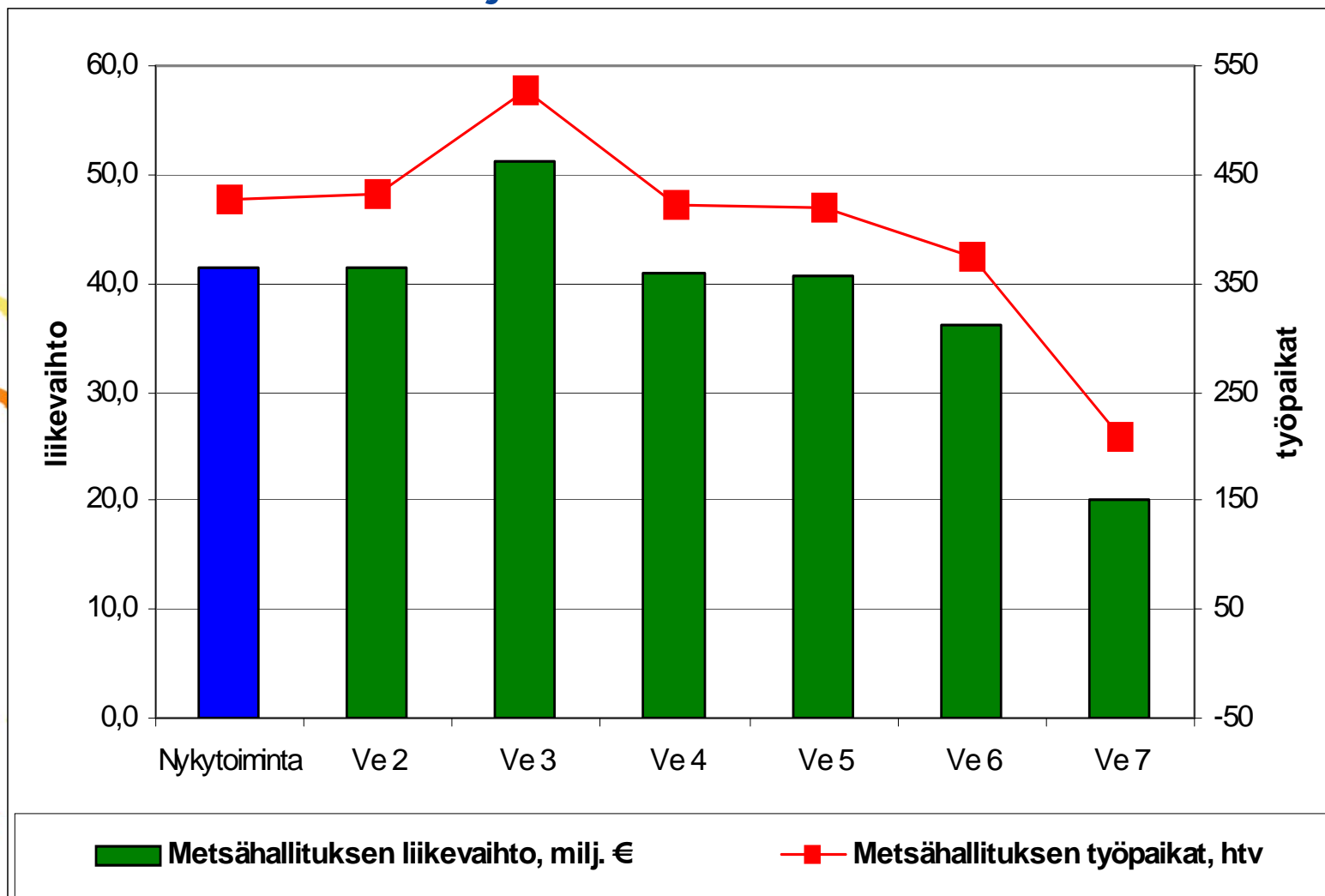


Alternative courses of action in W and E Lapland

- Option: current model
 - ⑩ *continuing the previous path*
- Option: development of ecological network
 - ⑩ *the valuable biotope network has been complemented with sites agreed upon with environmental associations and in the Southern Finland forest inventory*
- Option: eco-tourism and recreation
 - ⑩ *more restrictions on fellings in the vicinity of trails, cross-country skiing tracks and other recreational and tourism functions*
- Option: reindeer husbandry
 - ⑩ *fellings restricted in areas with important lichen pasture grounds*
- Option: forestry
 - ⑩ *aiming for a forest management and valuable biotope network similar to that of privately owned forests*



Metsähallitus jobs and turnover



Sustainable use of forest resources

- Logging volumes in NRPs are based on basic preconditions for 40 years, such as:
 - The standing wood volume (m³) in managed forests increases constantly
 - Availability of saw logs stays level or increases
 - The area of old forests stays at the level agreed
 - Nature objects and valuable sites permanently set aside
 - Restricted forestry on game and scenic sites and nearby touristic sites
 - Restricted regeneration loggings in northern borderline forests



Natural resource planning combines various targets

- The natural resource plans of the Eastern, Western and Northern Lapland were renewed in 2006. They outline the land use as well as the long term logging possibilities (10-40 years)
- Western and Eastern Lapland: Seven optional plans, of which the co-operation group recommended the "tourism-enhancing" option. Metsähallitus accepted it, but increased forest protection more due to the dialogue process with the ENGOs
- Possibility to leave a dissenting argument on the documents in cases where consensus is not reached

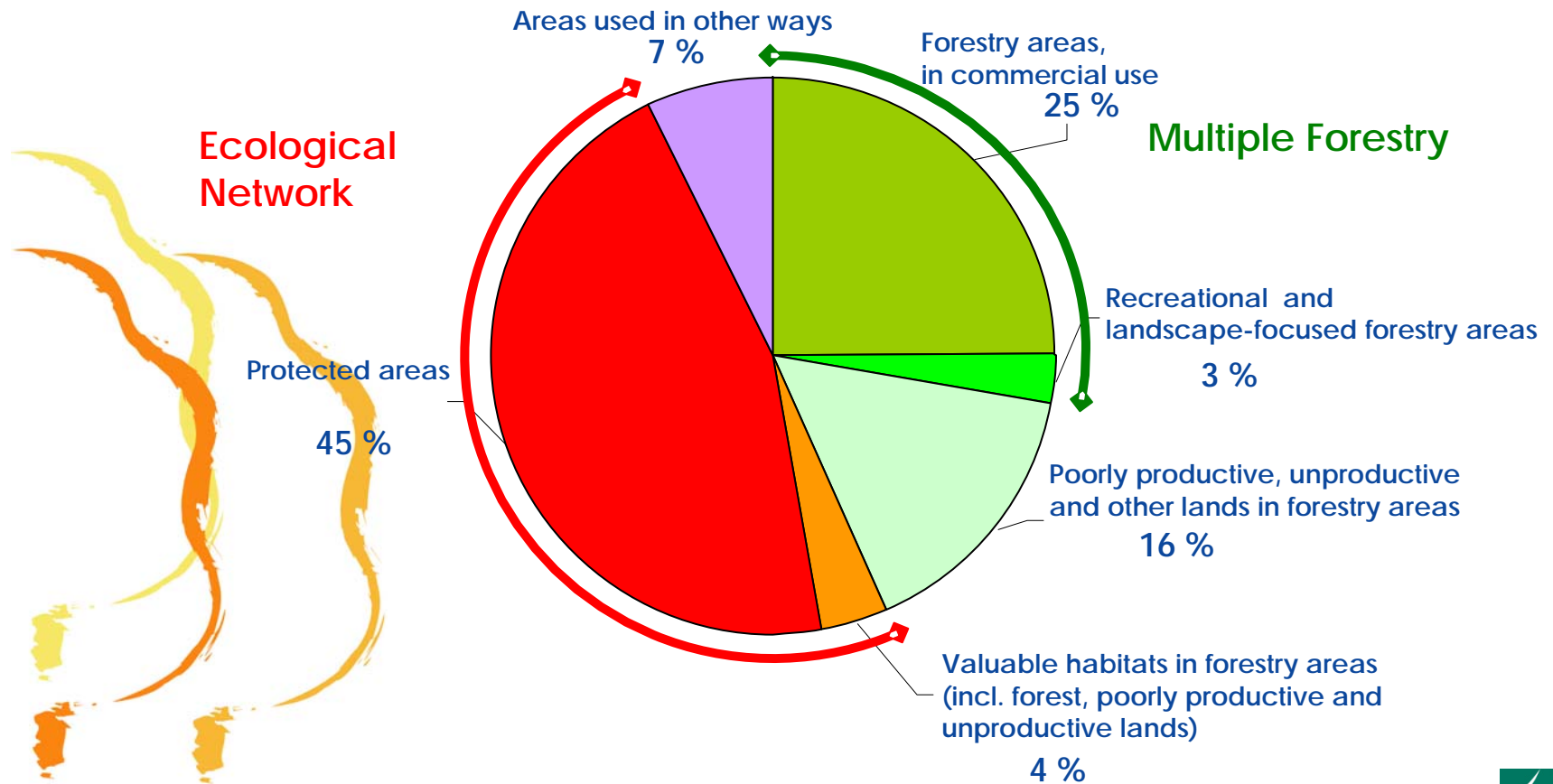


Main outcomes of natural resource planning

- Up-to-date land use distribution
- Revised targets for maintaining biodiversity
- Priority areas for recreational use
- Harvesting plan for managed forests
- Targets for the management and service provision in conservation areas



Land-use distribution in state-owned lands in Lapland



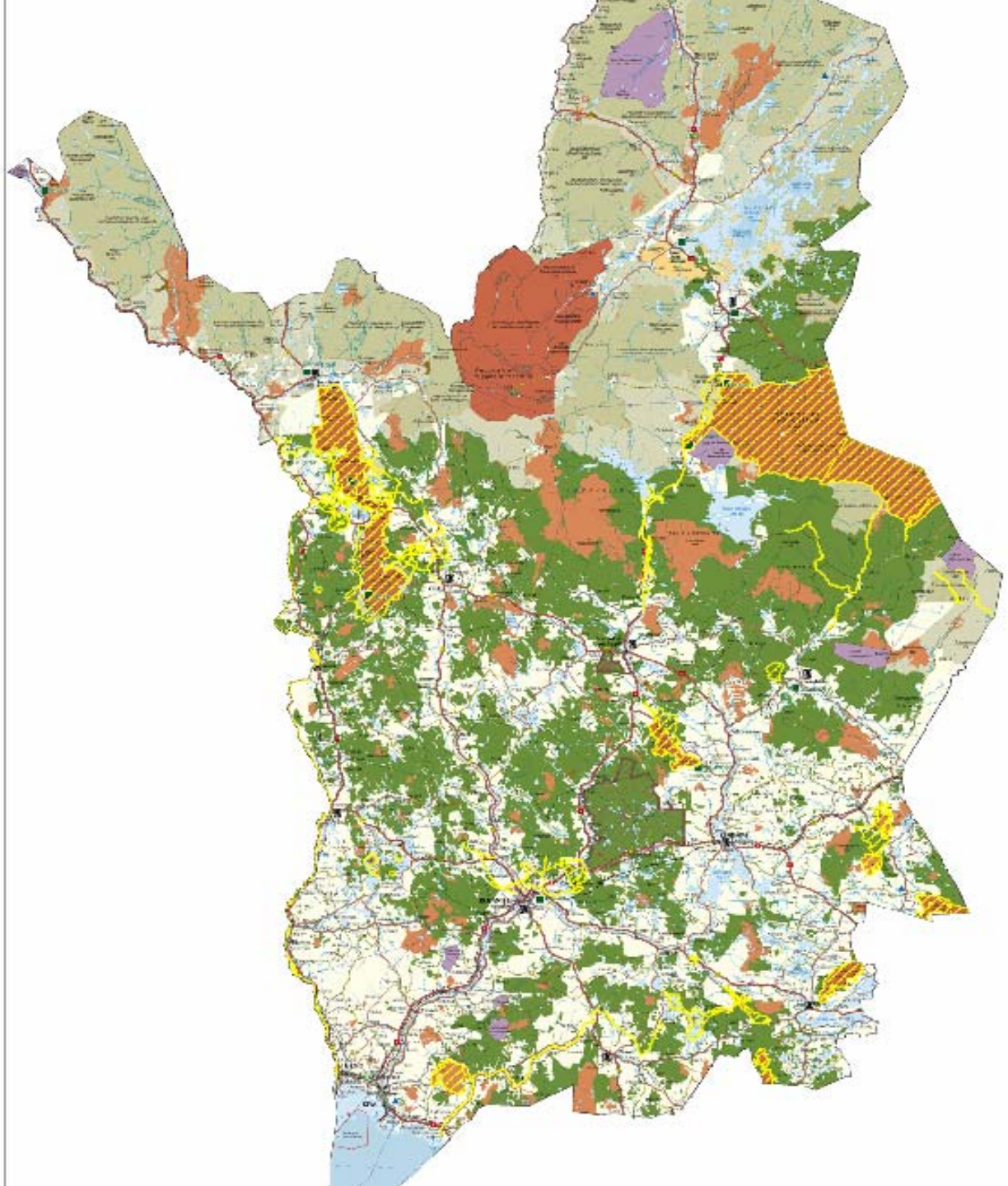
Tourism and forestry living together in Lapland

- Most of the national parks and other protected areas in Finland are situated in Lapland, which provides good opportunities for nature-based tourism and nature-lovers. Commercial forests in Lapland are semi-natural, with only local tree species and forestry methods mimicking the natural processes.
- The growing tourism business is based on large volumes and short visits in nearby surroundings. Snow scooter safaris and other disruptive activities can only be practised in commercial forests.
- Loggings far from any tourists' routes are often opposed using tourism as an excuse. Metsähallitus aims at using special silvicultural methods and scenic logging restrictions in the vicinity of the recreation areas and routes with people.
- Tourism and recreation routes planned together with municipalities and other stakeholders as well as written agreements of routes, eg. for sledge dog safaries, with tourism companies form the basis for co-operation.

Forestry is carried out in only 28% of state lands in Lapland, recreation freely in almost 100 % state lands and waters.

Clear-cuts (average size 5 ha) and seed tree loggings take place in 0.6 % of commercial forests annually.





Metsähallitus priority areas for recreation and tourism

- Natural Heritage services provide routes for skiing, hiking and snowmobiling; camping sites; open cottages etc.
- Forestry co-operates with natural heritage services as well as local stakeholders to find the best practises.
- Logging restrictions along routes and touristic sites taken into account in planned cut calculations.
- Developing continuous cover forest management, selective loggings, small openings.
- Careful delineating of regeneration stands using larger retention tree groups, tree species mixture, special land marks and topographical features.
- Young stand tending and thinnings positive to the scenery: tree size and opening the view.
- Soil preparation problematic, but often needed to ensure the new stand of natural seedlings.



Before logging and after



Metsähallitus - Holistic approach to the management of state-owned forests

- Financial revenue from managed forests
- Cost efficiency
- Multiple use of all state-owned lands
- Protection of biodiversity

- Reconciliation of various uses and overall benefit
- Managed and diverse forests for multiple uses

