

Basis of Regional Park Management in metropolitan area

A case study of Chojnowski Regional Park Poland



Agata Cieszewska, PhD
Renata Giedych, PhD
Department of Landscape Architecture
Warsaw University of Life Sciences – SGGW
POLAND

Hämeenlinna, Finland 28-31 May 2008

Structure of presentation

→ Instruments of protected areas management

→ Case study area

→ Method of zoning

→ Provisions for planning

→ Conclusions

Instruments of protected areas management

CONSERVATION PLAN:

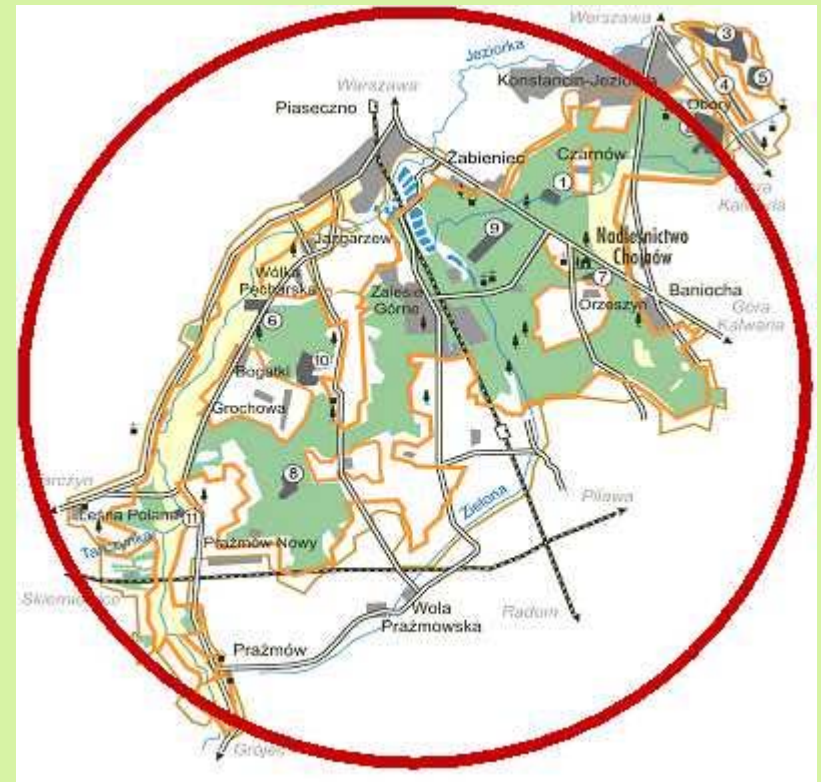
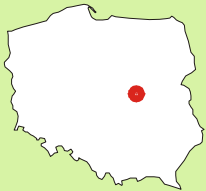
→ instrument of protected areas management

- National Parks
- Regional Parks
- Nature Reserves
- Natura 2000 sites

→ instrument of sustainable tourism development

→ instrument of higher order in relation to spatial planning documents

Study area: Chojnowski Regional Park



Established in 1993

Area of 67,96 km²

One of the smallest regional Park in Poland

Part of green belt of Warsaw Metropolitan Area

Regional park – nature protected area in economical use

Main function – recreation

Objectives of research: landscape values



Natura 2000 habitats



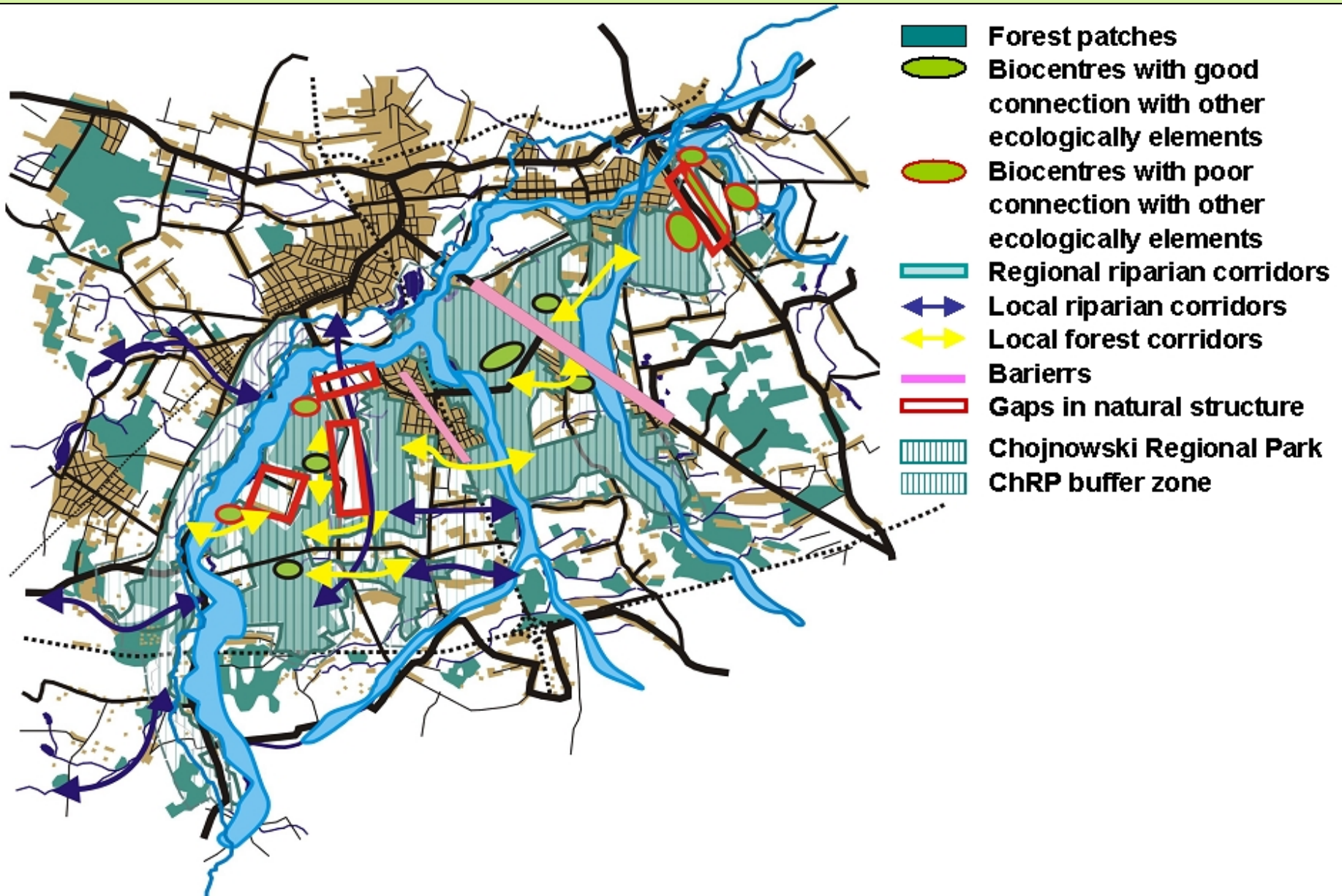
Mosaic of land use



**Traditional countryside
of Masovia**



Objectives of research: ecological network

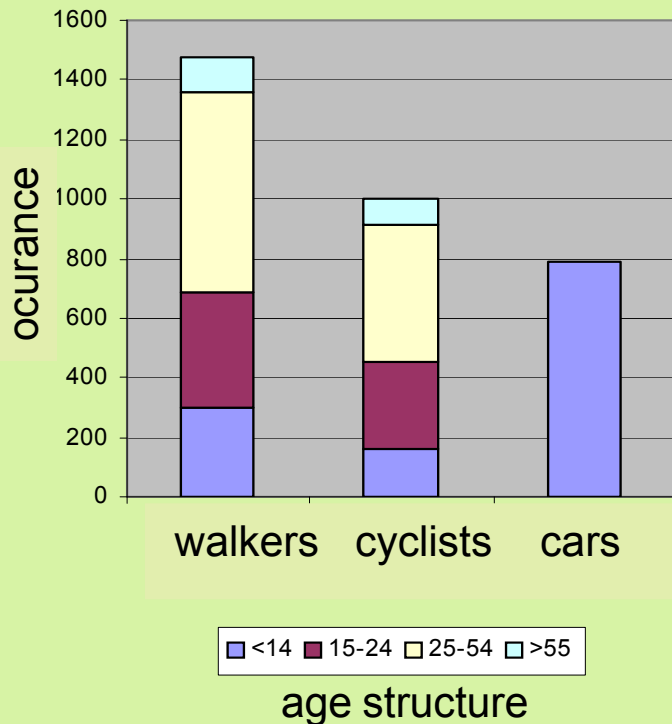


Objectives of research: tourists flow

Two days of monitoring (warm June weekend 2006)

22 monitoring points

157 questionnaires



Problems

INVESTMENT PRESSURE

- Landscape transformation
- Water regime changes
- Biodiversity loss



INSUFFICIENT TOURIST INFRASTRUCTURE

- Tourists program is concentrated in one place
- Unsuccessful tourist system of information
- Lack of recreational places for disabled people



Concept of zoning

ecological network
existing and planned land use

The diagram consists of two overlapping ovals. The top oval is dark red and contains the text 'ecological network existing and planned land use'. The bottom oval is dark green and contains the text 'tourists flow landscape values'. The intersection of the two ovals is a darker shade of red and contains the text '→ Basis of landscape protection zones' and '→ Basis of tourist intensity zones'.

→ Basis of landscape protection zones

→ Basis of tourist intensity zones

tourists flow
landscape values

Types of zones

LANDSCAPE PROTECTION ZONES

ZONE OF STRICT PROTECTED AREAS

ZONE OF EXISTING LAND USE STRUCTURE PRESERVATION

ZONE OF LAND USE DEVELOPMENT

Ecological network development

ZONE OF LAND USE DEVELOPMENT

Economic activity development

TOURIST INTENSITY ZONES

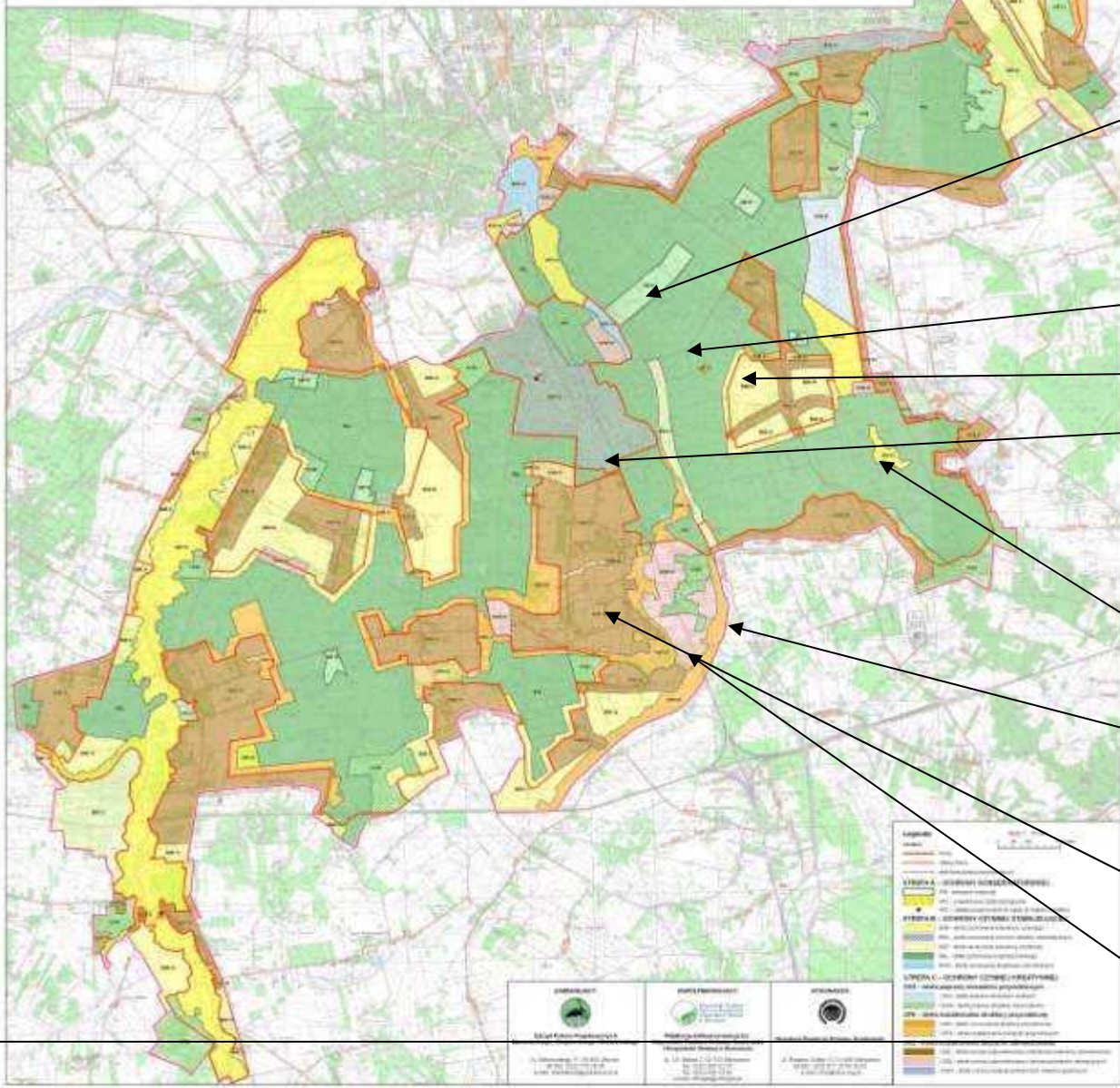
CONCENTRATED

LINEAR

INFORMAL

PLAN OCHRONY CHOJNOWSKIEGO PARKU KRAJOBRAZOWEGO

OBSZARY REALIZACJI DZIAŁAŃ OCHRONNYCH - STREFY FUNKCJONALNO-PRZESTRZENNE



LANDSCAPE PROTECTION ZONES

**Strict
protected areas**
nature reserves

**Existing
land use structure
preservation**
forests

land in agricultural use

historical urban structure

**Ecological network
development**
ecological structure
improvement

creation of ecological
connectivity

**Economic activities
development**
residential and services
areas

sport and recreation resorts

T
O
U
R
I
S
T

I
N
T
E
N
S
I
T
Y

Z
O
N
E
S

Conservation plan: provisions

ZONES OF LANDSCAPE PROTECTION

ECOLOGICAL NETWORK DEVELOPEMENT

Activity types:

- forest corridor improvement
- riparian corridor improvement
- ecological connection improvement
- creation of ecological connectivity

Tools:

- afforestation
- shelterbelts planting
- change of species structure according to natural habitat

ECONOMIC ACTIVITY DEVELOPMENT

Activity types:

- residential
- services
- sport and recreation resorts

Tools:

- significant share of biological active areas in new investments
- minimal area of plot for new investments
- ecofriendly fencing

Conservation plan: provisions

TOURIST INTENSITY ZONES

CONCENTRATED

Tourist infrastructure:

- picnic areas,
- watering places,
- educational centres,
- adventure parks,
- parking lots,

LINEAR

Tourist infrastructure:

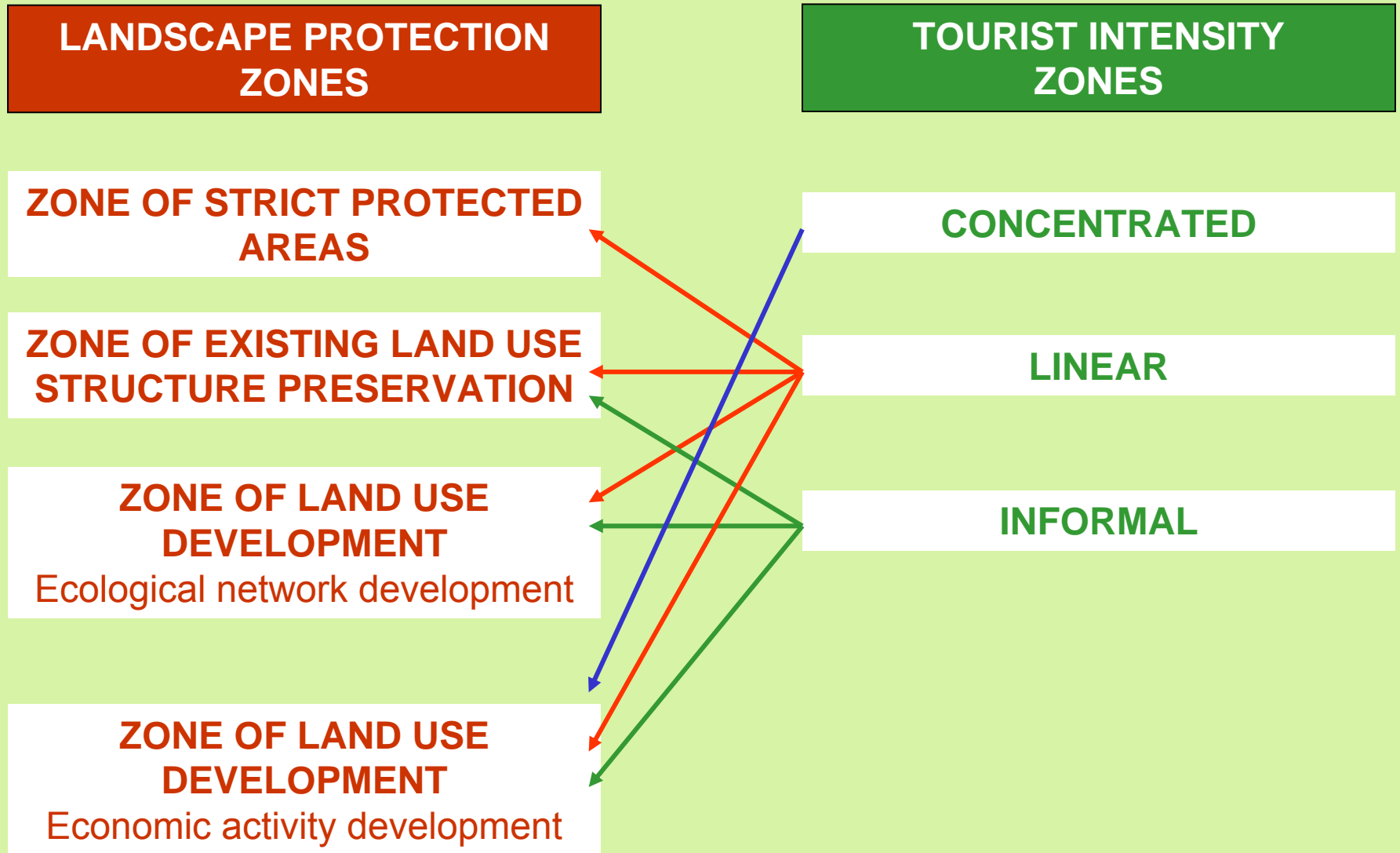
- pedestrian trails
- cyclist trails
- horse trails
- interpretative trails

INFORMAL

Without special infrastructure

Limited access to strict protected areas

Types of zones: relations



Conclusions

New efficient approach:

- ❖ two types of zones:
 - landscape protection zones – basis: ecological network and land use structure
 - tourist intensity zones – basis: ecological network, land use structure, landscape values, tourists flow

- ❖ tourist infrastructure development suitable to new model of recreation
- ❖ economical development suitable to ecological function
- ❖ economical development activity tools



Thank you!

do not hesitate to contact:

agata_cieszewska@sggw.pl

renata_giedych@sggw.pl