

The Northern Lapland forest conflict: Ethical aspects of local livelihoods, culture, legality, sustainability and global markets

David Gritten, Ville Hallikainen, Timo Helle,
Mikko Hyppönen, Olli Saastamoinen, Seppo
Sajama and Jarno Valkonen

Content of the presentation

1. Introduction (the conflict, study area, research project)
2. The economical importance of the sources of livelihood which are based on the nature
3. Some features of the forestry
4. Reindeer herding and the role of the forests in this source of livelihood
5. The attitudes and opinions of the inhabitants
6. The ethical analysis and some ideas about its role in the conflict management?

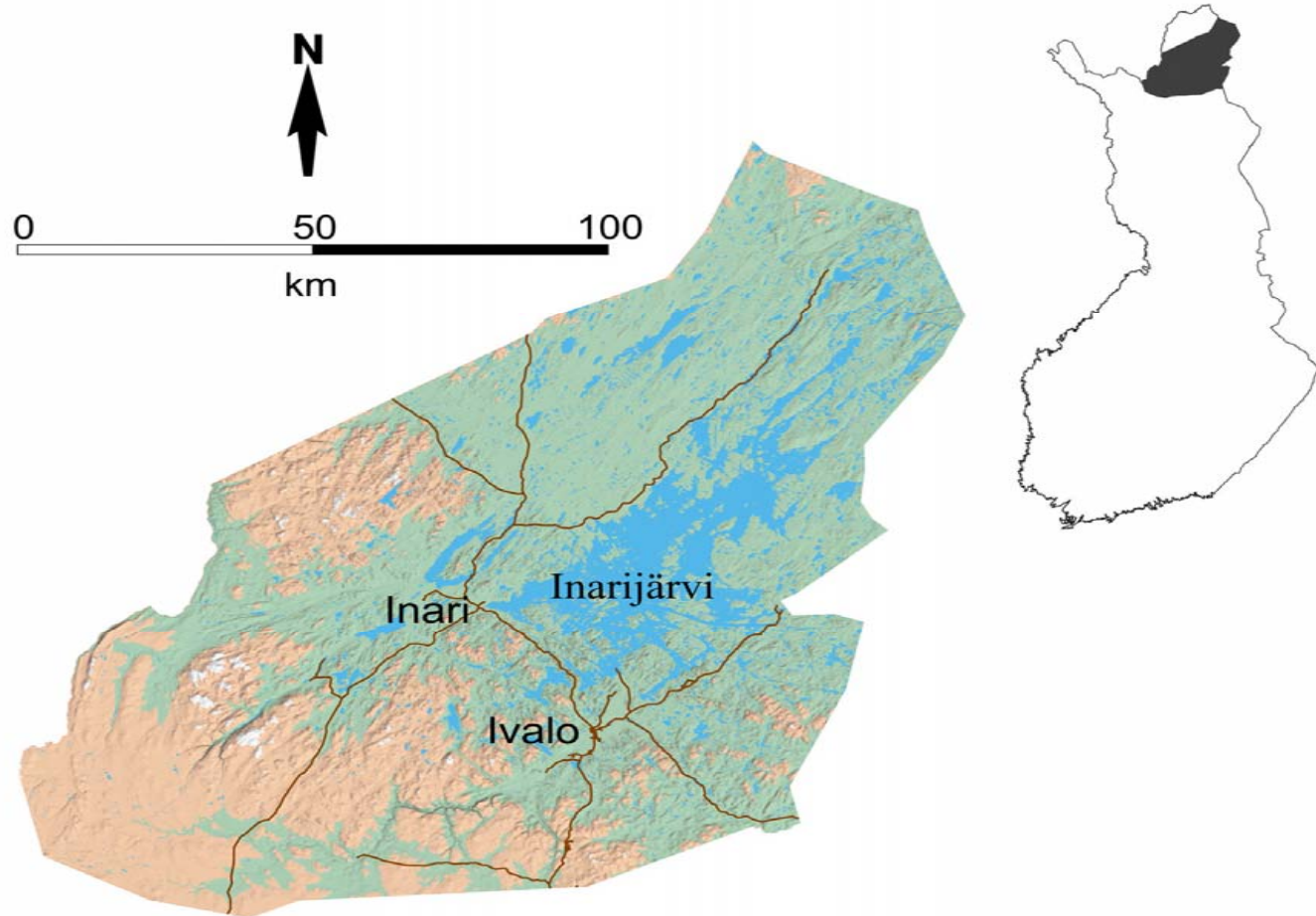
Introduction

- ▶ There have been several debates and conflicts between forestry and reindeer husbandry in the Northern Lapland during the last few decades.
- ▶ Most of the forest area is owned by the Finnish Forest and Park Service (FFPS). The conflict has been focused on the use of these public forests.
- ▶ Multi-goal management planning of these natural resources has not solved the problem.
- ▶ The Upper Lapland is Sami homeland. The conflict has its cultural and juridical dimensions.
- ▶ Ethical analysis may help to outline the conflict and be one of contributing on its part to the conditions for sustainable resolution of the conflict.

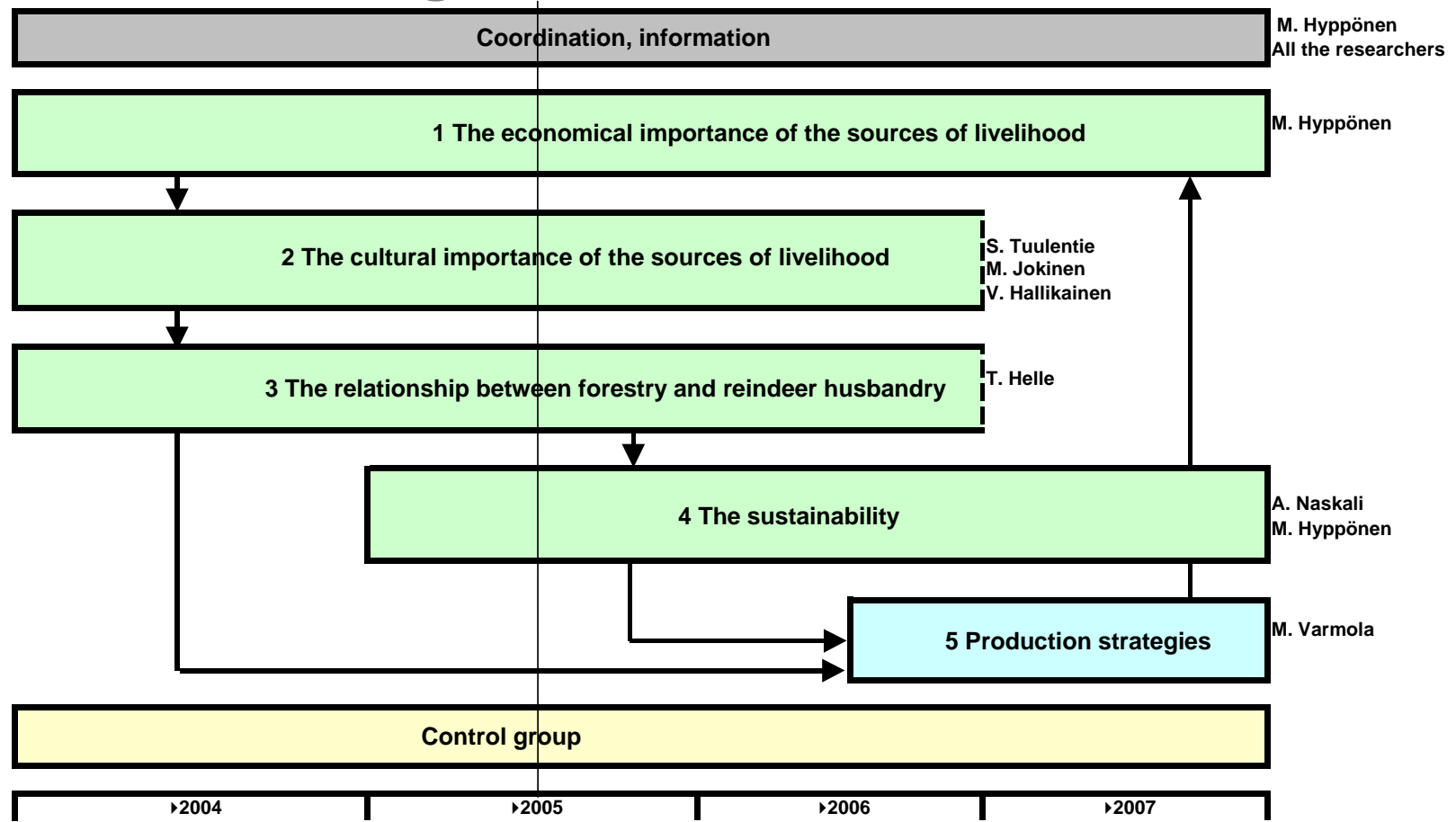
The location of the study area and Saami homeland



The conflict area: The municipality of Inari



The research project for the Upper Lapland conflict management



The importance of the nature-based sources of livelihood in Inari

	Gross income mill. €	Gross income %
Forestry, private	3,1	1,1
Nature conservation, FFPS	3,2	1,1
Reindeer herding	4,0	1,4
Forest industry	5,1	1,8
Forestry, FFPS	5,9	2,1
Tourism	56,5	19,8
Total of the above mentioned (milj. €)	77,8	27,3
Total, Inari (mill. €),	284,8	100

The importance... continued

	Employed, person-year	Employed, %
Forestry, private	30	1,1
Nature conservation, FFPS	38	1,4
Reindeer herding	217	8,3
Forest industry	37	1,4
Forestry, FFPS	74	2,8
Tourism	526	20,0
Total		
Of the above mentioned	922	35,0
Inari, all(person-year)	2629	100

►Vatanen et al. 2006

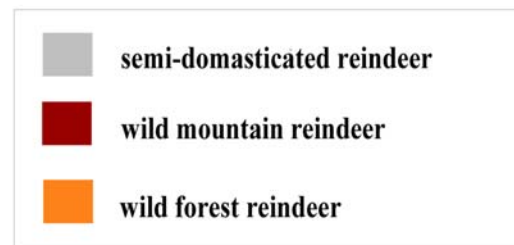
The forests and forest sector in Upper Lapland

- ▶ The Finnish Forest and Park Service (Metsähallitus) started the commercial cuttings in the area after the Second World War.
- ▶ The cuttings reached their maximum in 1980s, about 200 000 m³ annually.
- ▶ During the last few decades the coverage of protected areas has increased considerably, about **half** of the productive forest area in Inari has been protected.
- ▶ The annual cuttings has been decreased being about the half of the maximum mentioned above.

The forest sector, continued

- ▶ There is not much forest industry in the area, a great proportion of the timber is carried out of the area for further processing.
- ▶ The forests of the area are very productive (keeping in mind the northern location!). The annual cuttings of 115 000 m³ will not change the proportion of the matured forests (are older than 140 years) during the next three decades (decrease being from 62% to 55%).

Reindeer populations in Fennoscandia



Reindeer husbandry in Upper Lapland

- Old livelihood of Saami
- The present winter herd about 72 500 reindeer, from which 39 000 in Inari
- The number of reindeer owners 1100 (most Saami), from which 600 in Inari (about 200 households)
- Meat production about 0.8 mill. kg
- Conflicts between forestry (Inari) from the early 1960's onwards
- The Act on Reindeer Management, 2 §: "... State-owned land is not allowed to use so that it causes considerable harm to reindeer husbandry."

Use of reindeer lichens (main food)

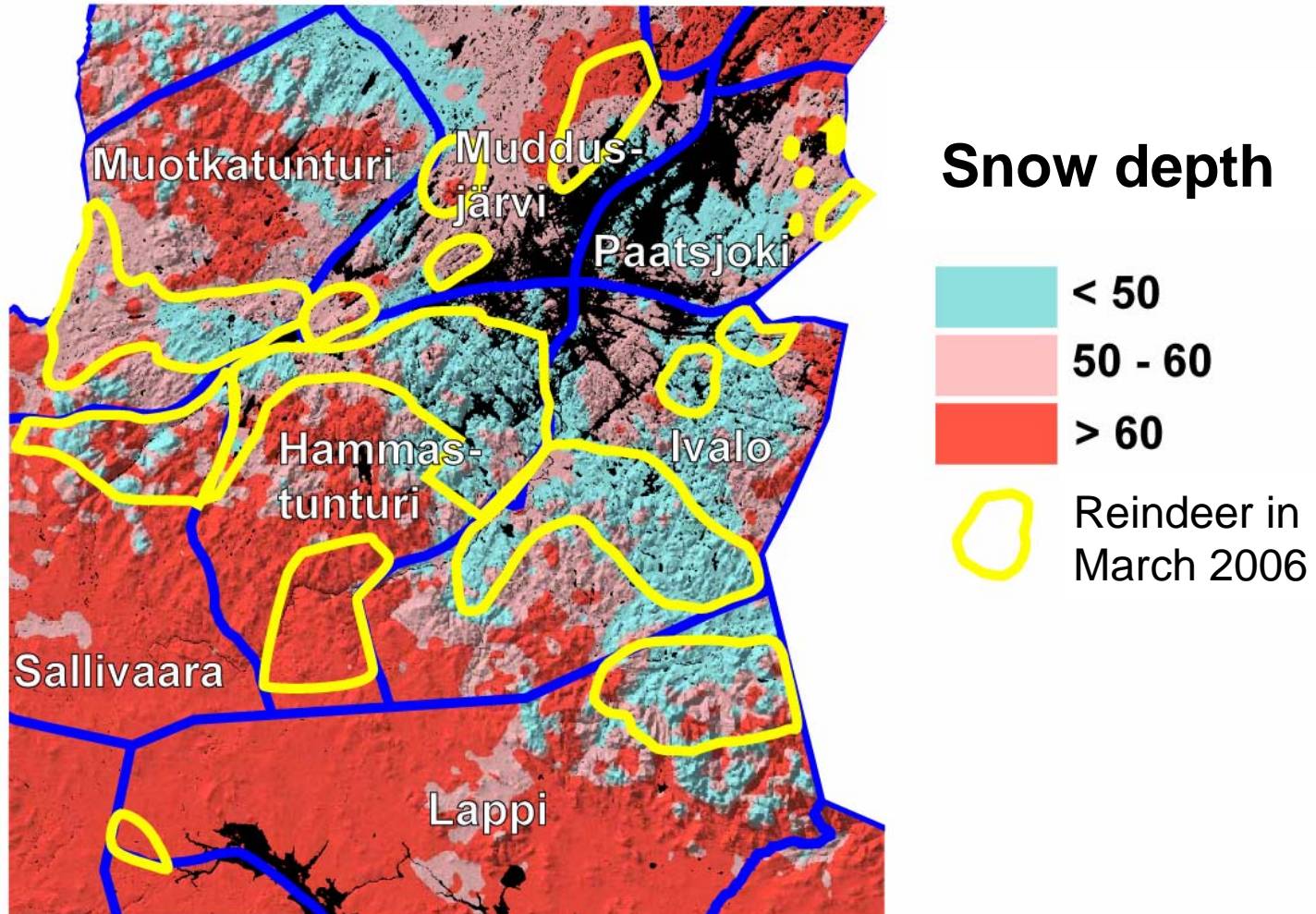
- ▶ In mid and late winter reindeer prefer old forests
- ▶ Lichen biomasses are lower in young forests
- ▶ Several factors are involved, including concentration of reindeer on (windy) clear-cuts during insect season and resulting trampling of fragile lichen vegetation



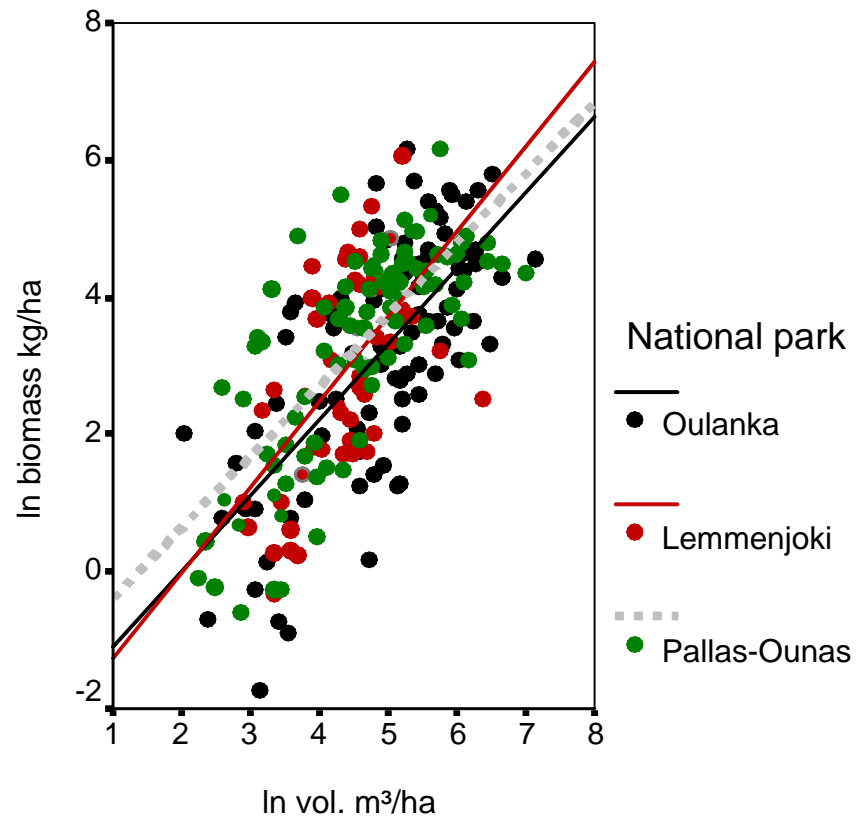
Metla/hanke 2



Reindeer herds March 2006 in relation in snow depth



Relationship between stand volume and biomass of arboreal lichens (Jaakkola et al. 2006)



Metla/hanke 2509/OKur / 14.5.2003



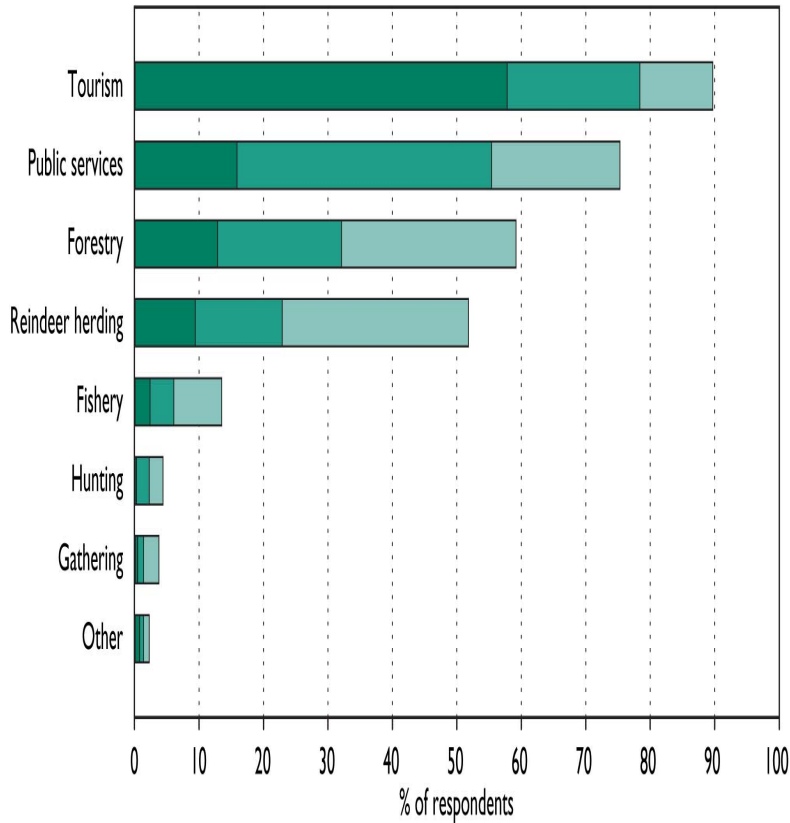
METSÄNTUTKIMUSLAITOS
SKOGSFORSKNINGINSTITUT
FINNISH FOREST RESEARCH INSTITUTE
www.metla.fi

The attitudes and opinions of the inhabitants

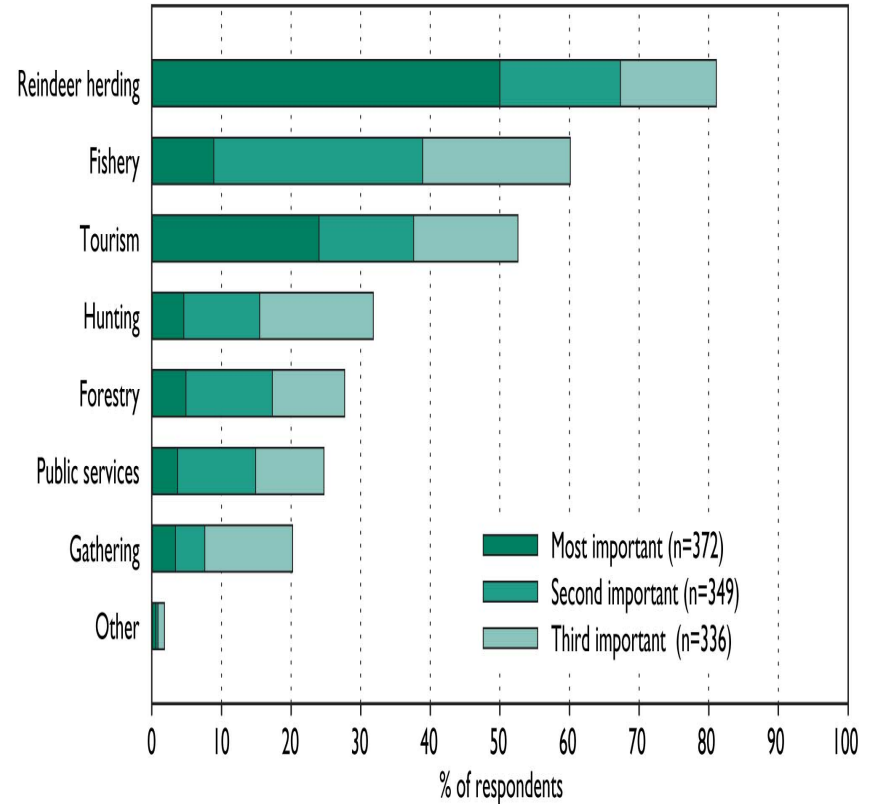
- ▶ Postal (and telephone) questionnaire and interview has been made to find out the attitudes and opinions of the inhabitants
- ▶ The role of the survey and interviews: generally accepted opinions may hide the existing conflict between single people and between different interest groups
- ▶ However, the results may help to outline the magnitude and amplitude of the conflict, as well as the effect of the statistically "purified" demographics on the attitudes and opinions

The significance of the sources of livelihood

a) Economical significance

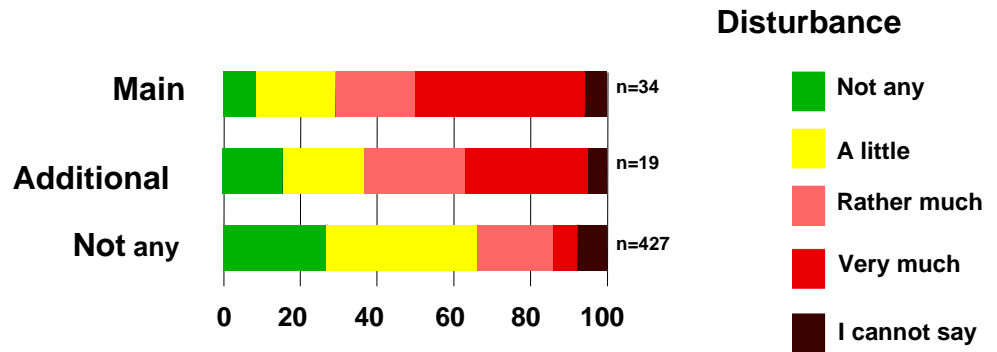


b) Cultural significance

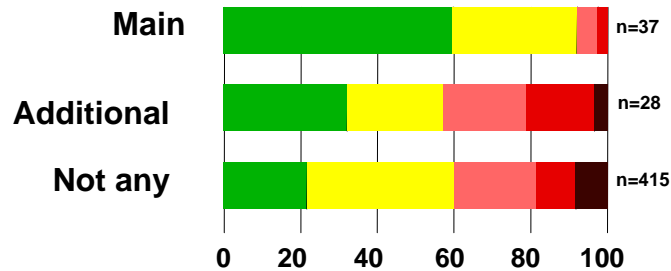


How much forestry disturbs reindeer herding?

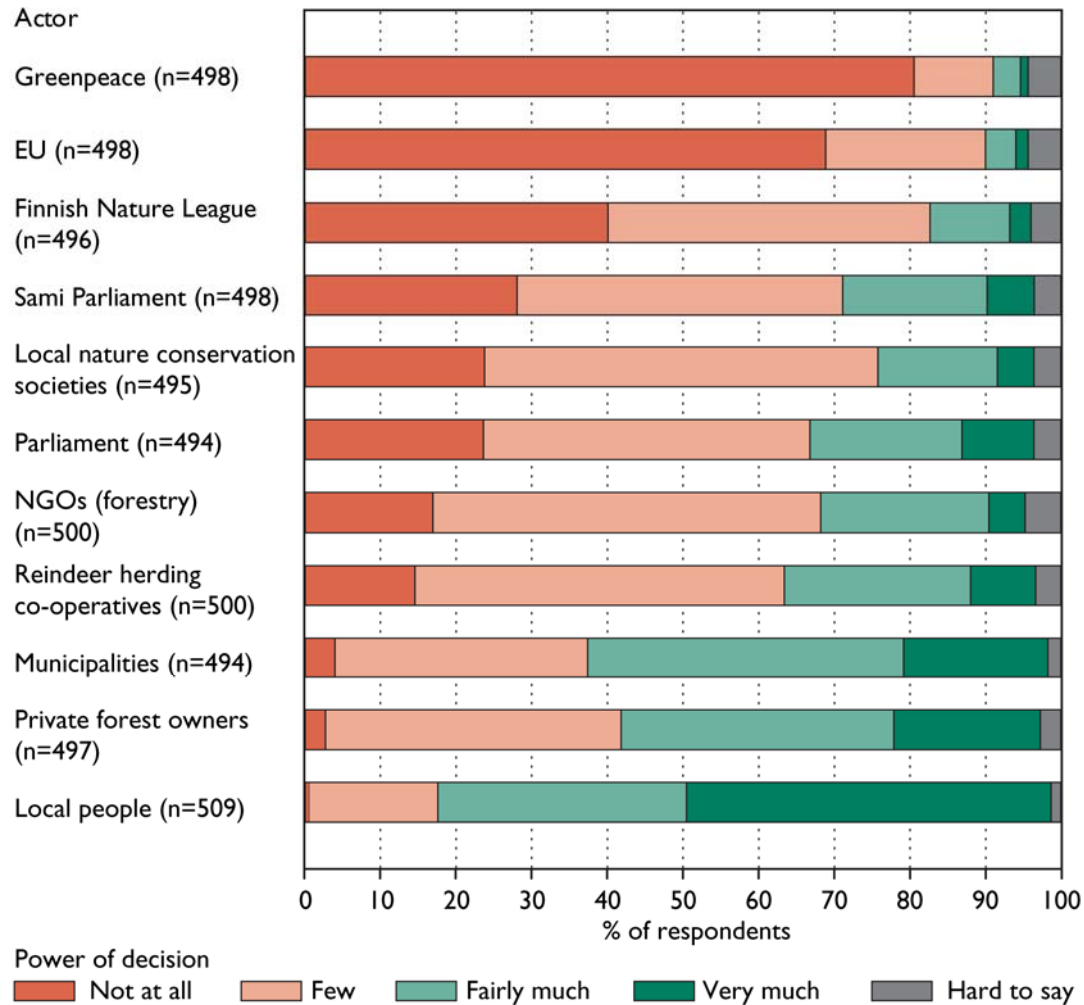
Reindeer income



Forestry income



Who should have power to make decisions about land use?



Some other results of the social survey

- ▶ People supported the reconciliation of the different sources of livelihood (joined production?)
- ▶ Forest cuttings (thinnings, regeneration) made by a man (not using harvesters!) for local industry was supported by the respondents widely
- ▶ The land usage pattern in the area was widely accepted, but there were remarkable differences between the groups of the respondents
- ▶ People supported a local decision-making but hesitated its functionality (Interview by Tuulentie et al.)
- ▶ People had an experience that they did not understand terminology in the discussion: the worlds of decision-makers and local inhabitants have not confronted each other (the Interview).