

Examining the linkages between community benefits, place-based meanings, and nature-based tourism:

A study of the Community Baboon Sanctuary, Belize

Miriam S. Wyman and Taylor V. Stein
School of Forest Resources & Conservation
University of Florida



Community-based Conservation

Deforestation → protected areas

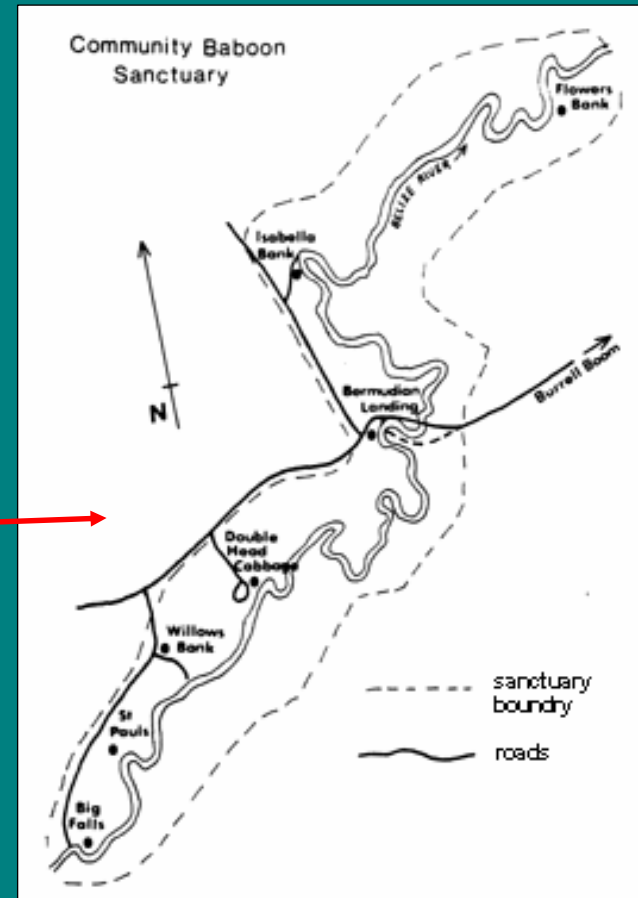
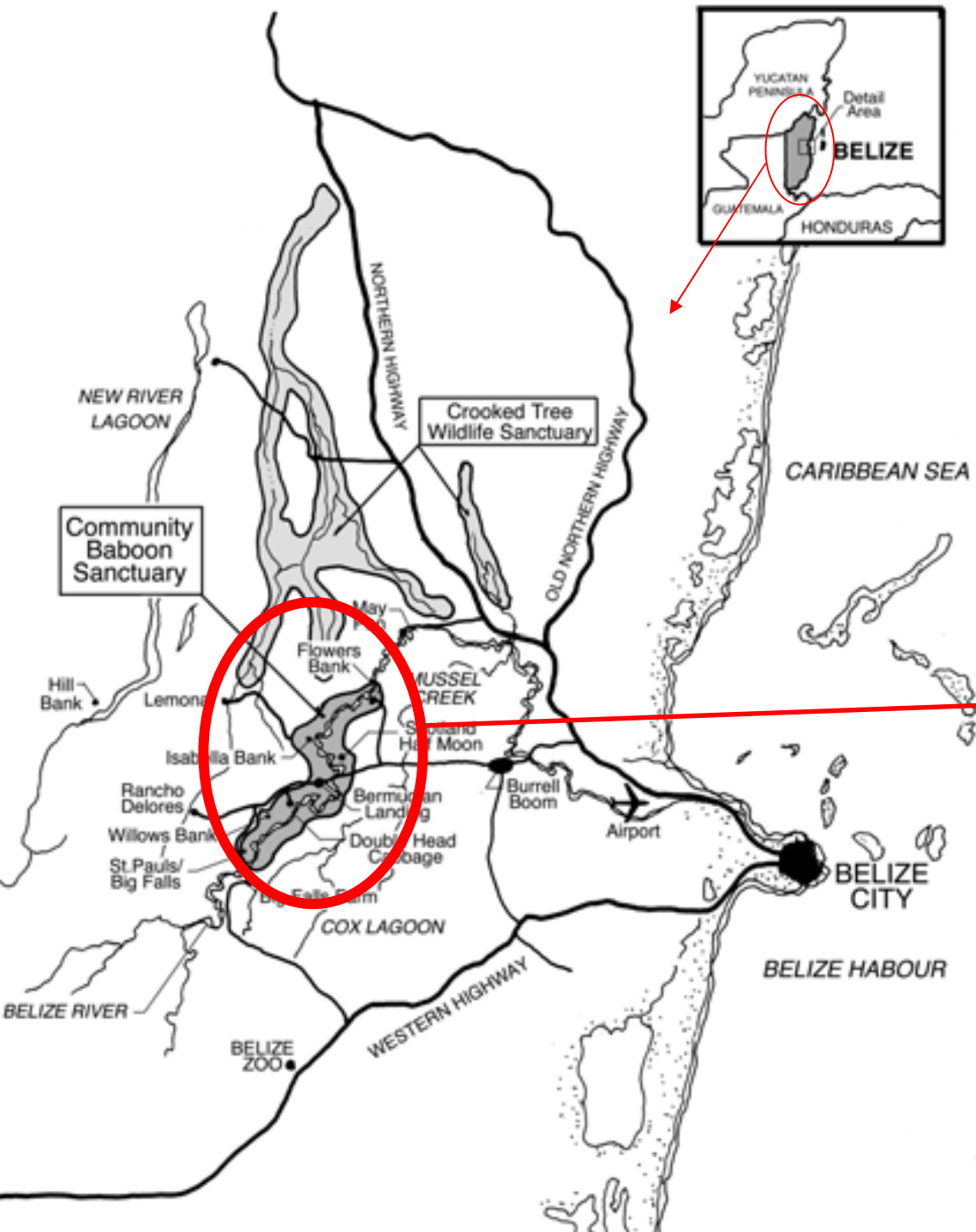
- Over 33,000 protected areas worldwide (Eagles, 2002)
- Belize: 35% of country designated protected area status

Reality = “Paper Parks” → community mgmt schemes

- Smaller / local regimes
- Dependence, contact, and knowledge of local resources

Conservation Initiatives + economic development





Map Credit: Horwich and Lyon, 1998

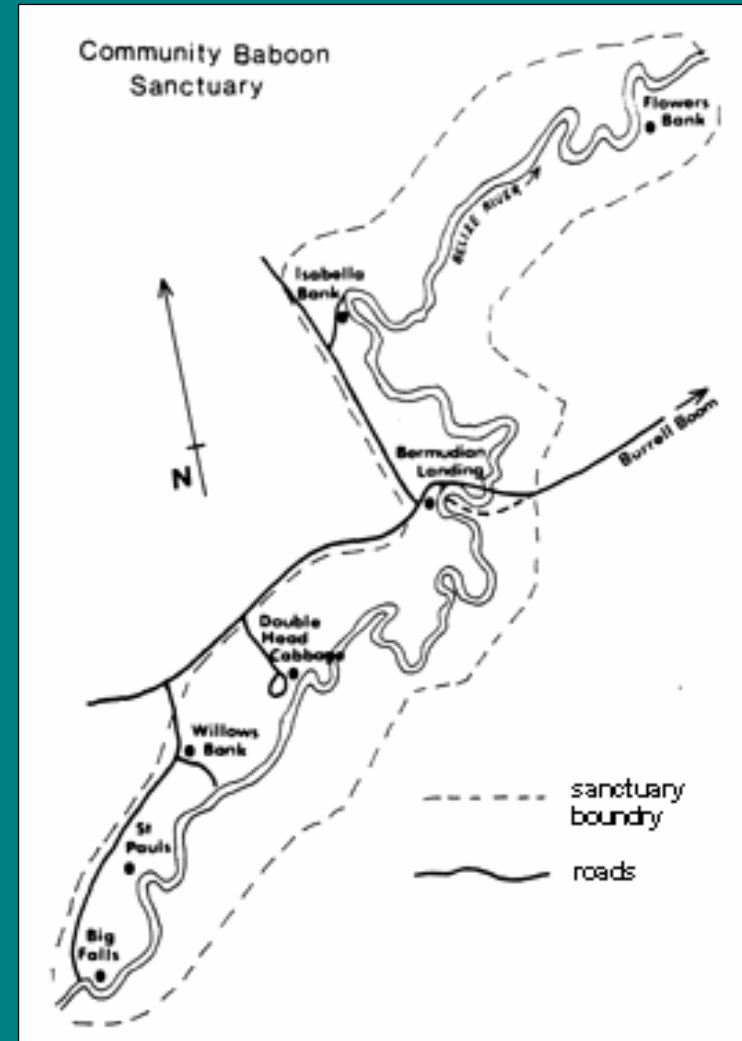
Unique Attributes

CBS population

- 220 households (approx. 1150 people)
- 7 Creole villages
- Private landholdings
- 4800 ha

Main economic activities:

- outside wage employment (Belize City) *
- small-scale agriculture (slash and burn milpa for home consumption)
- small-scale cattle raising
- nature-based tourism (primarily in Bermudian Landing)



Map Credit: Horwich and Lyon, 1998

Unique Attributes

- Established in 1985
- Impetus = protect black howler monkey (*Alouatta pigra*) habitat

Importance of riparian forests for “baboons”

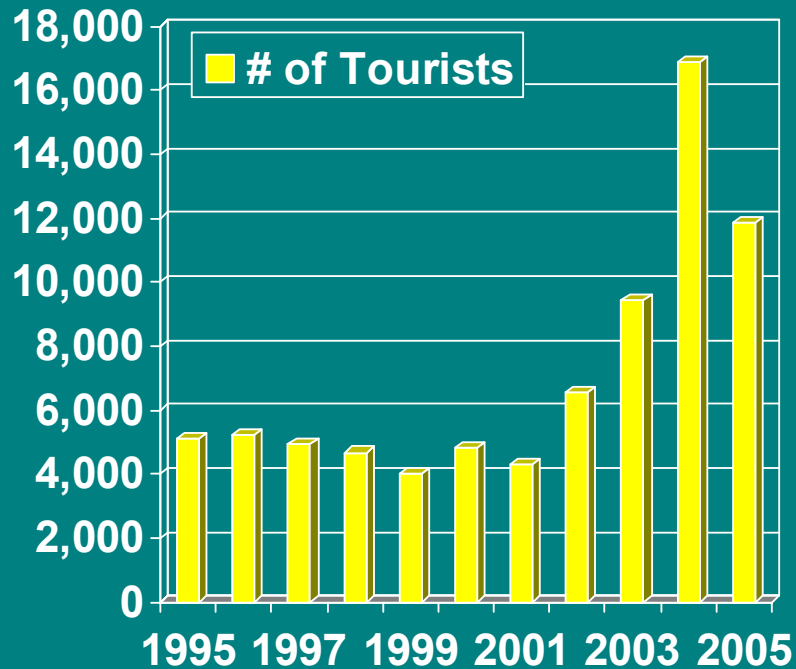
Main threat = habitat disturbance due to:

- agriculture (small-scale, shifting slash-and-burn)
- cattle (clearing down to the river for water access)



Conservation Initiative:

Nature Based Tourism (howler monkey)



Research Questions and Objectives:

1. What are communities' perceived benefits of riparian forests?

- Examine perceptions of community benefits attributed to riparian forests

2. What function does place attachment have as an incentive to conserving forests

- Present place-based meanings (relationships) of riparian forest landscapes (Tourism vs. Non-tourism residents)



Definition of Benefit

Benefit: (Driver et. al.,1978)

- “a desirable change of state and/or an improved condition of an individual, a group of individuals, a society, or even non-human organisms”
- now being used by others in human dimensions of natural resource studies (Anderson et al., 2000; Booth et al., 2002)



Place Attachment: Framework Definition

place attachment - “places that gain meaning and definition through the individual experiences that occur within those places”. Tuan (1977), a human geographer

Accepted Basic Definition – “an emotional bond between people and places” (Cuba and Hummon 1993; Low 1992; Proshansky et al. 1983; Williams et al. 1992)

- Use: geography, psychology, sociology, and anthropology



Sample

- 135 residents interviewed within 7 villages (approx. 20 households per village / 61% of pop.)
- Stratified Sample (Tourism Residents)
 - 26 Tourism (~ 50 total)
- Other residents (non-tourism) randomly selected



Methods

Lit Review → Nominal Group Meetings → Survey Questions

Survey Questions

1. Community Benefits

2. Place Attachment



Survey Questions

1. Community Benefits

Are riparian forests providing benefits?

- 9-item survey developed from Nominal Group meetings and established literature (e.g., Davenport and Anderson, 2005)
- Importance (5 point Likert scale)
- Attainment (4 point Likert scale)



Survey Questions

2. Place Attachment

- 12-item survey adapted from a variety of literature (Davenport and Anderson, 2005; Payton et al., 2003; Williams et al., 1992; and Jorgensen & Stedman, 2001)

- 8-item Likert scale

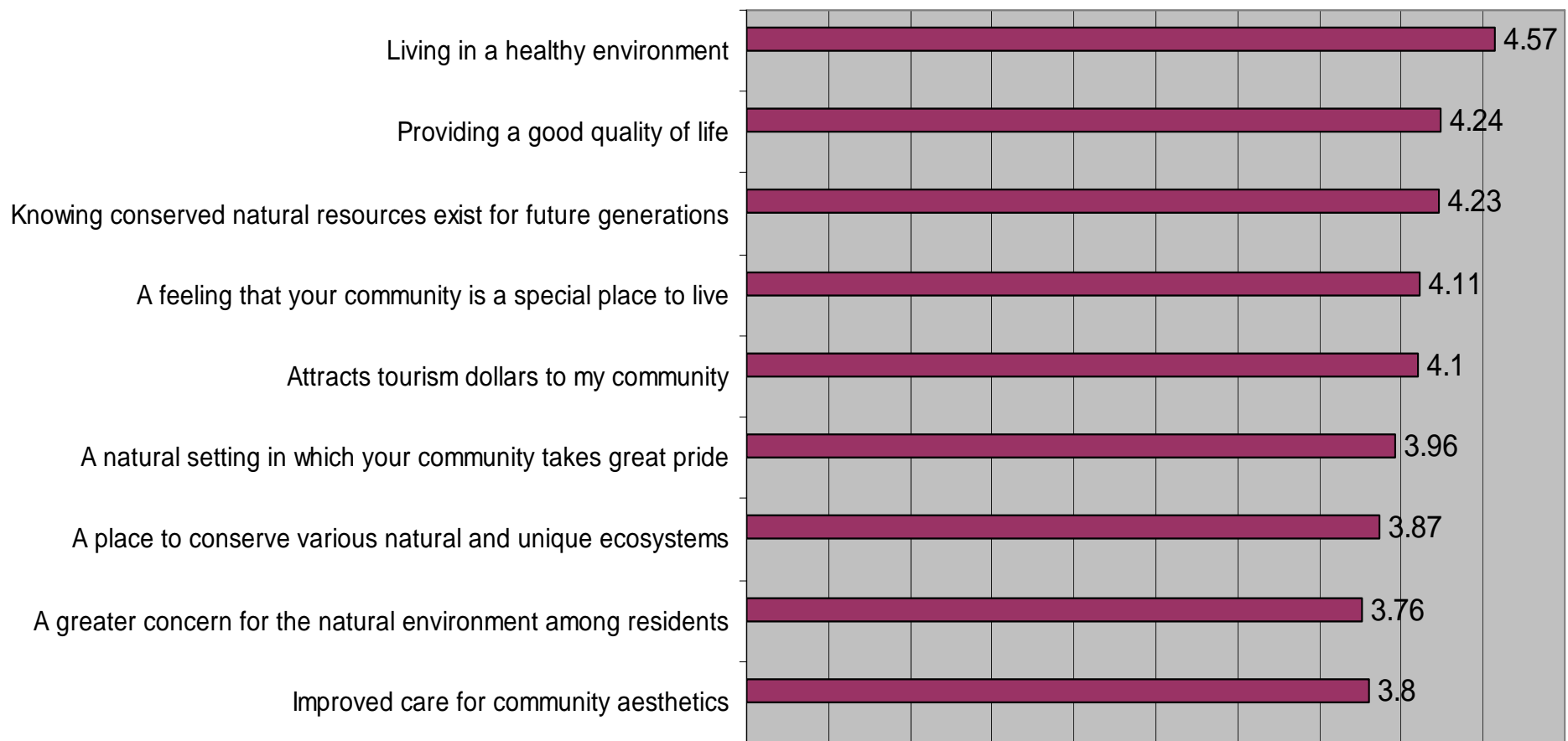
Categories:

Family Legacy, Community Character, Self Identity
Economic Stability, Nature and Natural Processes

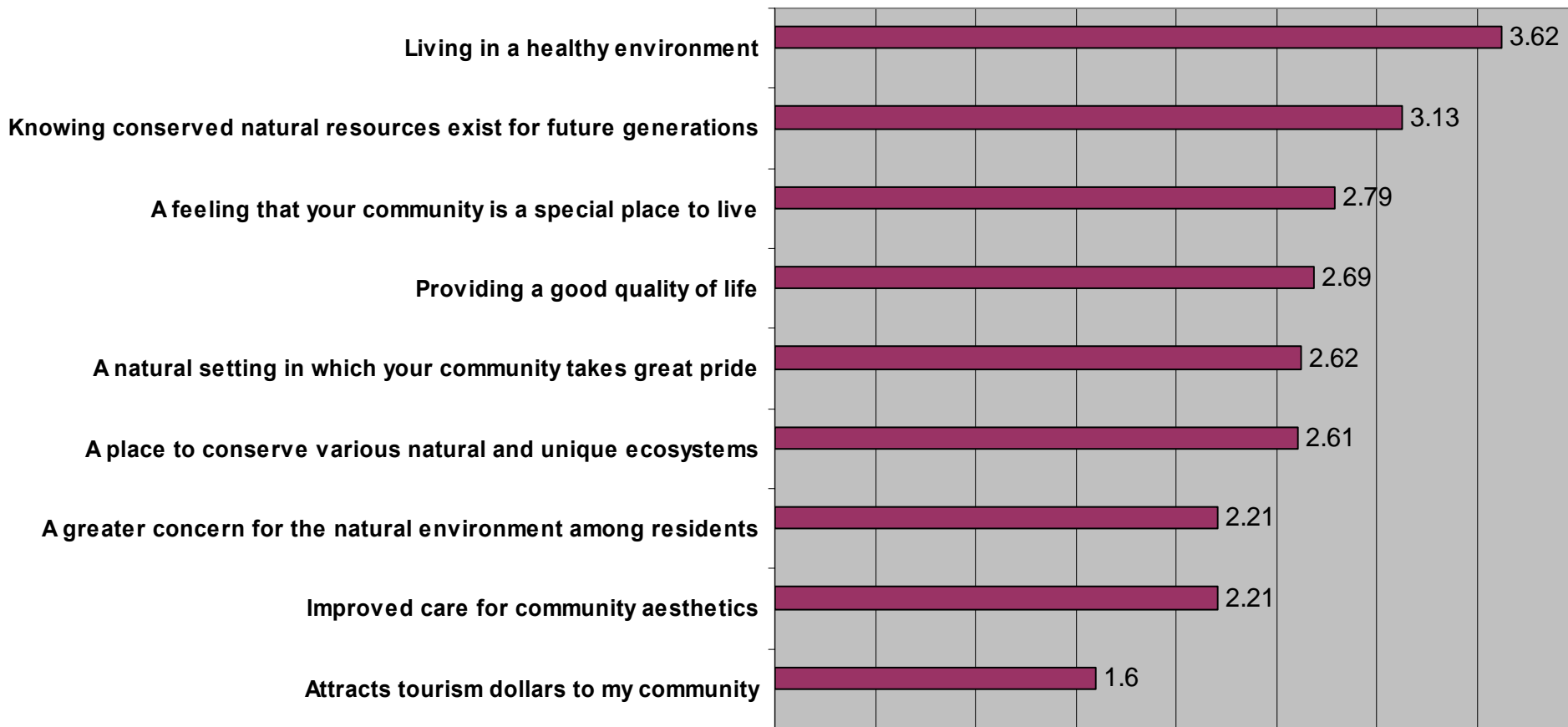


Results

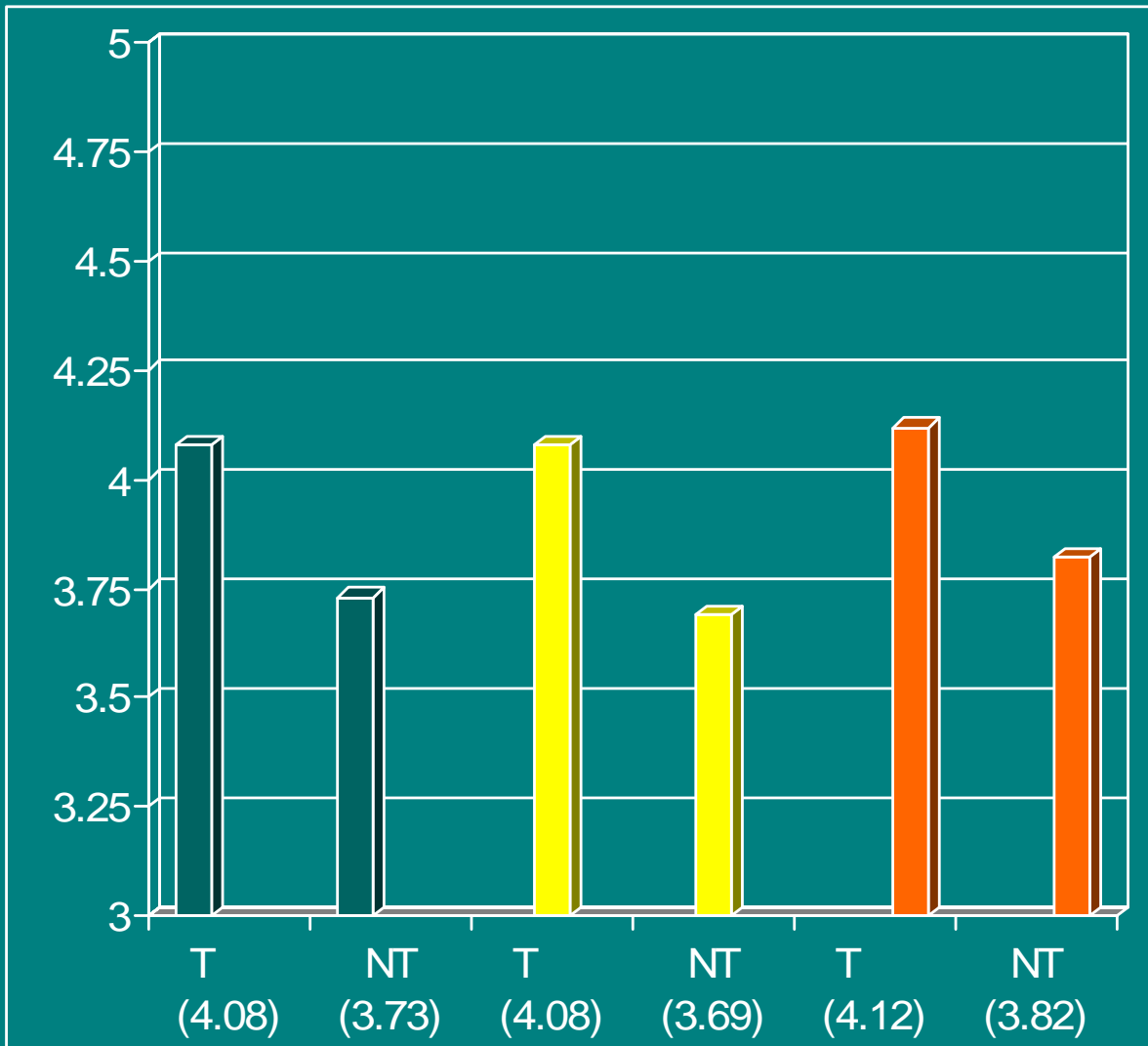
Community Benefits – Importance (General Means) (1 – 5 Likert scale)



Community Benefits – Attainment (General Means) (1-4 Likert Scale)



Community Benefits – Riparian Forests (Importance) (Tourism vs. Non-Tourism)



□ Improved care for community aesthetics *

■ A greater concern for the natural environment among residents *

■ A place to conserve various natural and unique ecosystems**

*Significant at 0.05 level (two-tailed)

** Significant at 0.1 level (two-tailed)

5-item Likert scale:

- 1 = very unimportant
- 5 = very important

Place Attachment – Riparian Forests (General Means - highest 4) (1-7 Likert Scale)

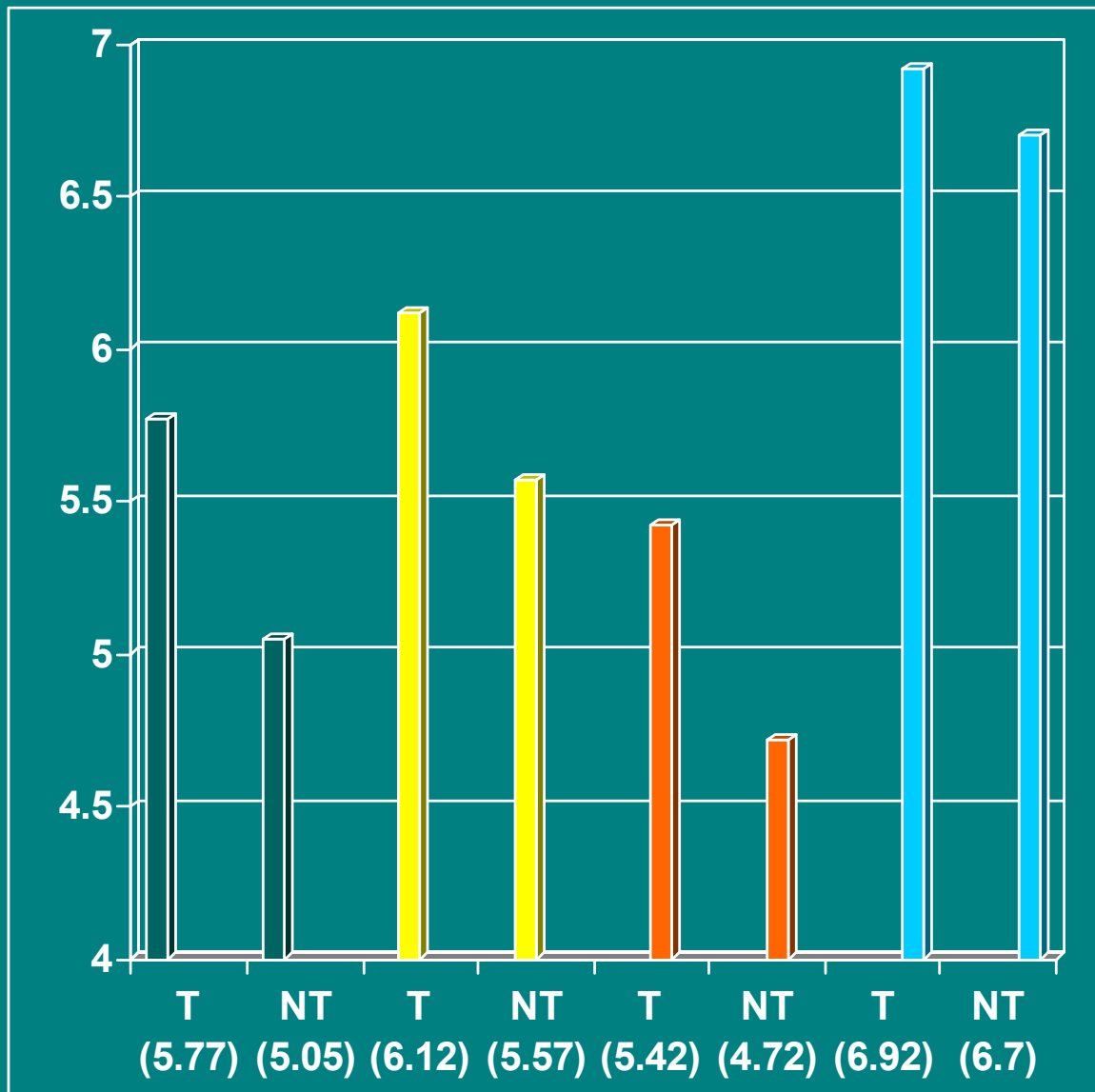
Highest: [Community Character (PI) – 3, Nature & Nat. Proc. (PD)]

- These riparian forests are important in providing habitat for wildlife (6.75)
- My community's history is strongly tied to this riparian forest (6.64)
- This riparian forest contributes to the character of my community (5.93)
- These forests have helped put my community on the map (5.67)

Lowest: [Economic Stability (PD)]

- My community's economy depends on riparian forests (3.66)
- My family's income or livelihood depends on riparian forests (2.53)

Place Attachment – Riparian Forests (Tourism vs. Non-Tourism)



- I feel a sense of pride in my heritage when I am there *
- These forests have helped put my community on the map *
- These riparian forests are important in protecting water quality *
- These forests are important in providing habitat for wildlife **

*Significant at 0.05 level (two-tailed)

** Significant at 0.1 level (two-tailed)

7-item Likert scale:

- 1 = strongly disagree
- 7 = strongly agree

Community Benefits Major Results

- Living in a Healthy Environment
 - Most important and most attained benefit (general)
- Attracting Tourism Dollars
 - Important, but least attained (general)

Tourism Residents:

Stronger importance in environment & conservation



Place Attachment Major Results

- Community character items
 - High agreement (general)
- Economic stability
 - Low agreement (general)

Tourism residents:

Stronger ranking of agreement that riparian forests contribute to protecting wildlife, water quality, and community pride.



Conclusion

1. Riparian forests are providing

- Conservation and environmental benefits
- Community character and connections to nature

2. Riparian forests are *NOT* providing

- Economic benefits or economic attachment

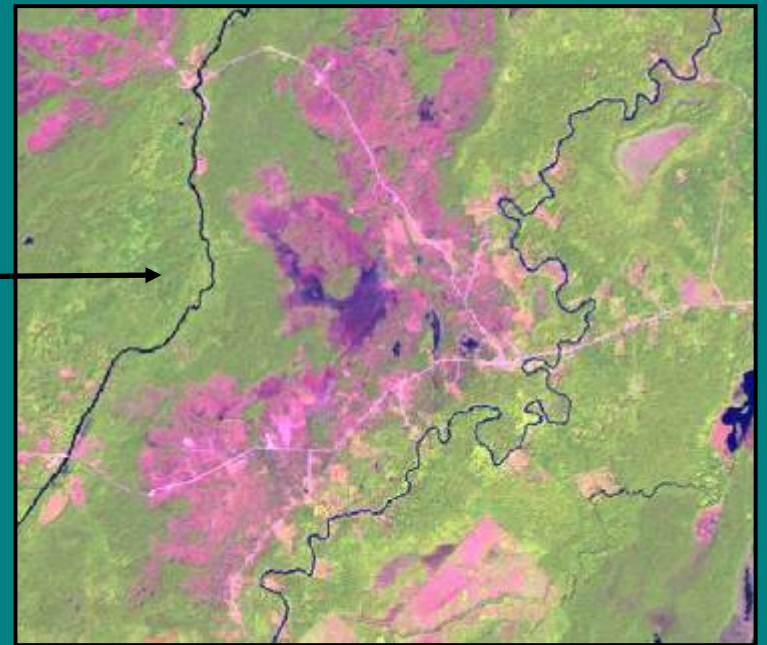
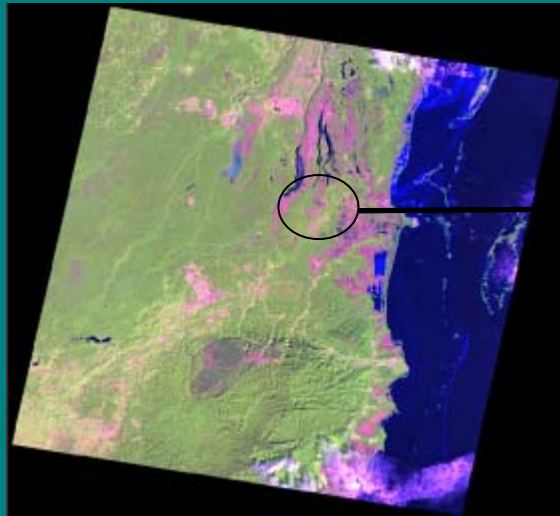
3. Community members relationship to forests Intangible, abstract, nonutilitarian, and complex Economic values are not present, but should be



Conclusion

4. Upcoming Research

- Satellite Imagery and Remote Sensing
- Connect household level information to landscape level





Special Thanks to:

University of Florida's Working Forests in the
Tropics Fellowship (NSF IGERT)

QUESTIONS?



Importance / Implications of Study

For local planning and management:

- The identification of how residents believe tourism can improve livelihoods and conserve natural resources
- How managers can better integrate tourism practices into community development and environmental conservation strategies.



Interviewed Residents

River: Yes = 47

No = 88

Pledge: Yes = 51

No = 84

Tourism: Yes = 26

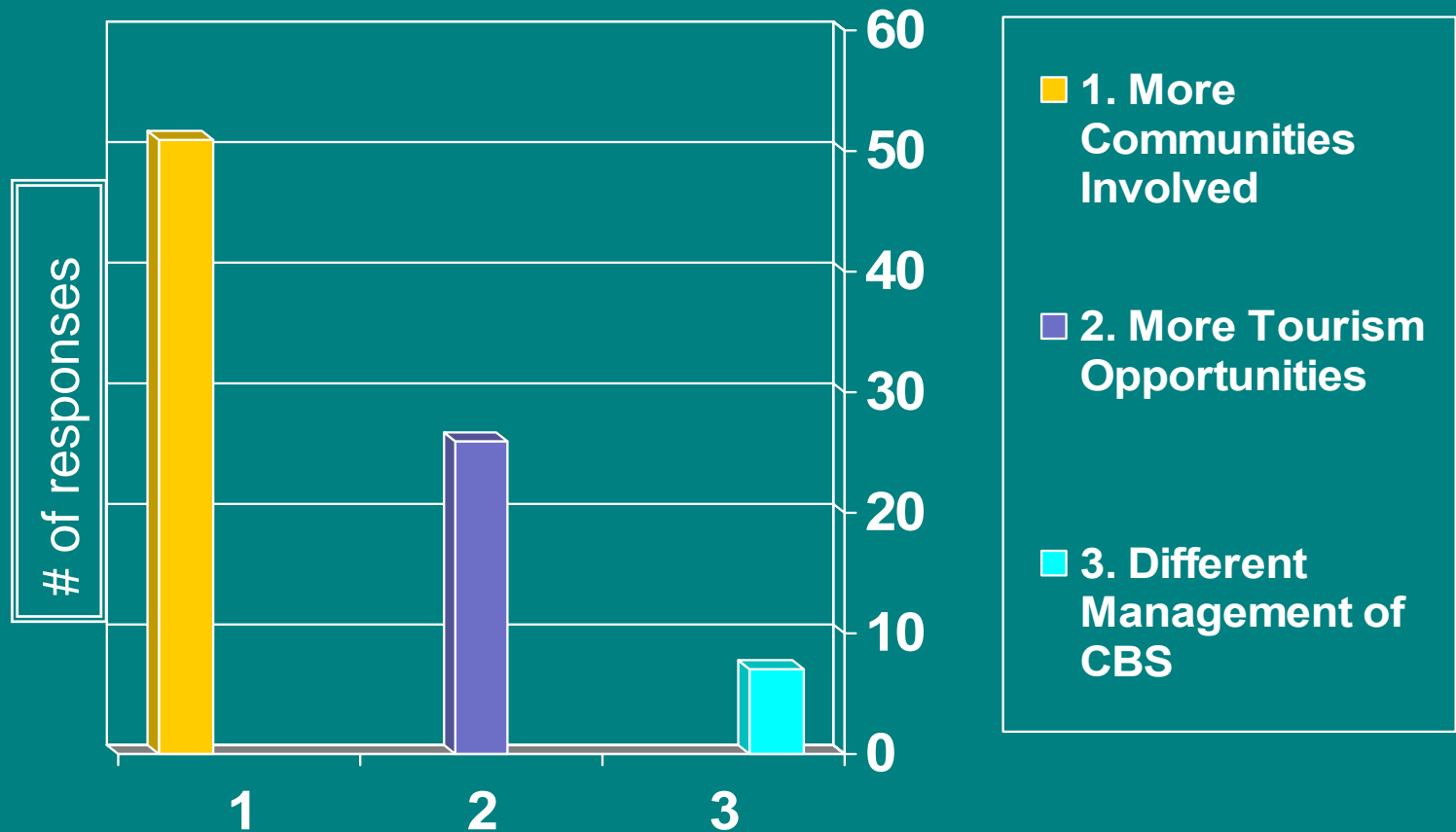
No = 109

River + Pledge = 33

Pledge + Tourism = 14

Open-Ended Improvement Questions

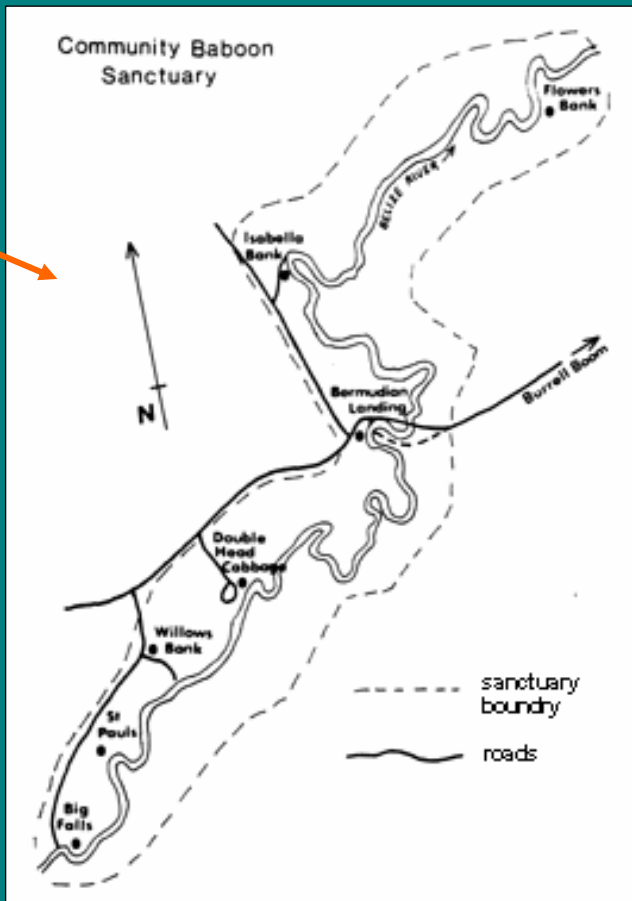
How could tourism be improved within the CBS?



Overview of Talk

- Background - Community Baboon Sanctuary (CBS)
- Study Sample
- Methods / Scales
- Results
- Study Conclusions





Study Site:
Community Baboon Sanctuary

Map Credit: Horwich and Lyon, 1998