

Biomass estimates of boreal dwarf shrubs in relation to their percentage cover and the number of samples

Salemaa, M.¹, Hamberg, L.¹, Hilli, S.² & Derome, J.²

Finnish Forest Research Institute: ¹Vantaa Research Unit, ²Rovaniemi Research Unit

Introduction

Ericaceous dwarf shrubs form a significant part of the understorey vegetation of boreal forests. Rhizomes and roots of dwarf shrubs may account for a considerable portion of the carbon stores in the organic layer, especially in northern forest ecosystems. The annual litter production of dwarf shrubs affect the formation of the organic layer and carbon and nutrient cycling in boreal forests.

Aims

In this poster we present preliminary results on

- 1) the relationship between the visually assessed aboveground cover (%) and the above- and belowground biomass of dwarf shrubs,
- 2) the distribution of the biomass of two *Vaccinium* species into above- and belowground compartments, and
- 3) coefficients of variation (CV%) for estimates of the average biomass of dwarf shrubs as a function of the number of samples

Material and methods

The data were collected from six Scots pine and six Norway spruce plots in Finland. The sample points consist of 30 cm x 30 cm squares, seven squares on each side of the plot, giving a total of 28 sample points per plot (Fig. 1). The cover % of the individual plant species was estimated visually before removing the sample square. Linear regression models (without intercept values) were used for predicting the biomass on the basis of the cover %. The bootstrap method (Resampling stats software) was applied in relating the CV% values to the number of samples.

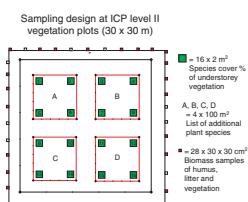


Figure 1. Sample design on the Forest Focus/ICP level II vegetation plot

Results

- The aboveground biomass of the dwarf shrubs was predicted relatively well on the basis of the cover values (Fig. 2a,c). On the other hand, there was more variation in the belowground biomass in relation to cover values, and the linear regression models had lower R² values (Fig. 2b,d).

- The slopes (b coefficients) of the regression models predicting above- or belowground biomass were higher in the data of the northern than of the southern plots (Fig. 2).

- The relationship between the cover and the aboveground biomass was relatively similar in the pine and spruce stands in the north, whereas the slope of the model for pine stands was steeper than that for spruce stands in the south (Fig. 2a,c).

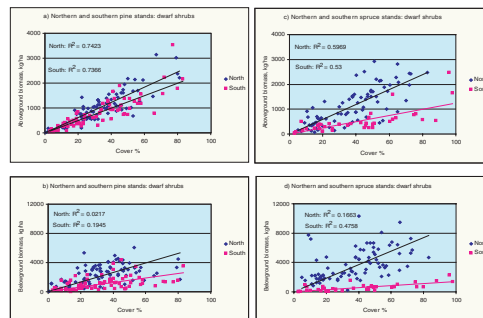


Figure 2. The relationship between the cover % and biomass values of dwarf shrubs in Scots pine (a,b) and Norway spruce (c,d) stands. Regression lines for northern and southern plots are drawn separately.

- *Vaccinium vitis-idaea* and *V. myrtillus* allocated 60 - 80 % of their biomass to the belowground parts depending on the site type and latitude (Fig. 3).

- The coefficient of variation (CV%) of the estimate of the average above- belowground biomass decreased the steepest when the sample number increased from 1 to 5. The CV % did not change significantly when the sample number was over 10 (Fig. 4a,b).



C.A.M. Lindman
http://runeberg.org/nordfor

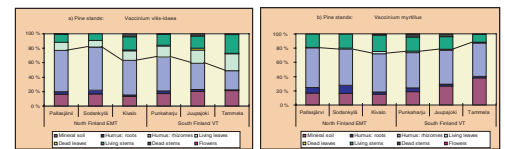


Figure 3. The distribution (%) of the total biomass of a) *Vaccinium vitis-idaea* and b) *Vaccinium myrtillus* into above- and belowground compartments (marked with a line). Data from Scots pine stands.

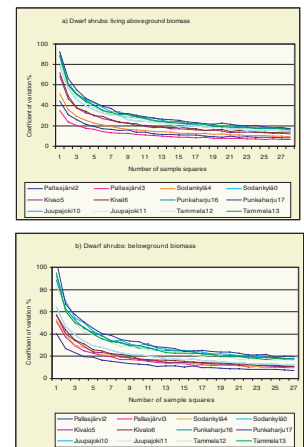


Figure 4. The CV% of the estimate of the average biomass of dwarf shrubs as a function of the number of samples. a) above- and b) belowground biomass. Examples from different sample plots.

Conclusions

The relationship between the cover and biomass values of dwarf shrubs varied between north and south Finland. Thus, when the cover data of understorey vegetation is used in predicting above- and belowground biomass/carbon content, the development of separate models for southern and northern areas would increase the accuracy of the estimates.