

# Testing steady states carbon stocks of Yasso07 and ROMUL models against soil inventory data in Finland

**A. Lehtonen<sup>1</sup>, T. Linkosalo<sup>2</sup>, J. Heikkinen<sup>1</sup>, M. Peltoniemi<sup>1</sup>, R. Sievänen<sup>1</sup>, R. Mäkipää<sup>1</sup>, P. Tamminen<sup>1</sup>, M. Salemaa<sup>1</sup> and A. Komarov<sup>3</sup>.**

[1]{Natural Resources Institute Finland (Luke), Natural resources and bioproduction, PO Box 18, FI-01301 Vantaa, Finland }

[2]{University of Helsinki, Department of Forest Sciences, PO Box 27, FI-00014 Helsinki, Finland}

[3]{Institute of Physicochemical and Biological Problems in Soil Science, Russian Academy of Sciences, 142290 Institutskaya ul., 2, Pushchino, Moscow Region, Russian Federation}

# Background

- **Why carbon stocks ?**
  - In Rantakari et al. (2012) and Ortiz et al. (2013) we found out that Yasso07 agreed with measured **soil carbon stock change**, but with high uncertainty
  - Todd-Brown et al. (2014): boreal forests may lose 28 Pg of carbon or accumulate 62 Pg of carbon during this century depending on the ESM (earth system model). *Differences between models mainly due to initial SOC content*
  - For emission estimation **due to land-use change and for future predictions** – we need to have precise and accurate estimate of **initial SOC stocks** and here we test if models match with data

- Rantakari, Miitta, et al. "The Yasso07 soil carbon model—Testing against repeated soil carbon inventory." *Forest Ecology and Management* 286 (2012): 137-147.
- Ortiz, Carina A., et al. "Soil organic carbon stock changes in Swedish forest soils—A comparison of uncertainties and their sources through a national inventory and two simulation models." *Ecological Modelling* 251 (2013): 221-231.
- Todd-Brown, K. E. O., et al. "Changes in soil organic carbon storage predicted by Earth system models during the 21st century." *Biogeosciences* 11.8 (2014): 2341-2356.

# Objectives

Testing Yasso07 and ROMUL model steady-states against soil carbon stock measurements, we ask:

1. Are litter quantity, -quality and weather data enough to estimate spatial trends with soil carbon stocks in Finland ?
2. Does soil texture have impact on carbon stocks through excess water / water limitation on decomposition?
  - We hypothesize that increased fraction of coarser soil textures increases soil carbon stocks by reduced decomposition due to drought.

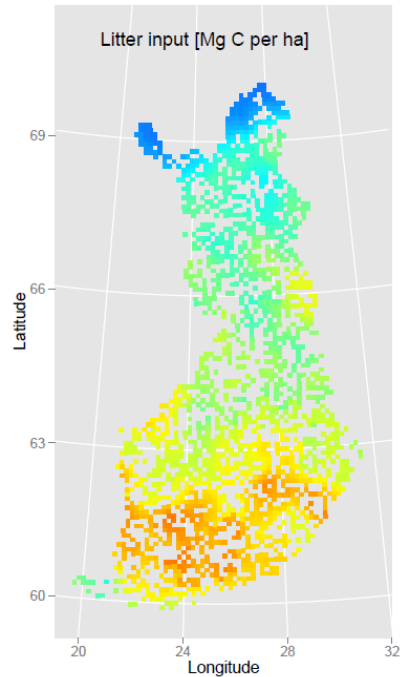
# Material and methods – model inputs

**We need litter input for soil models and that is obtained here from forest inventory**

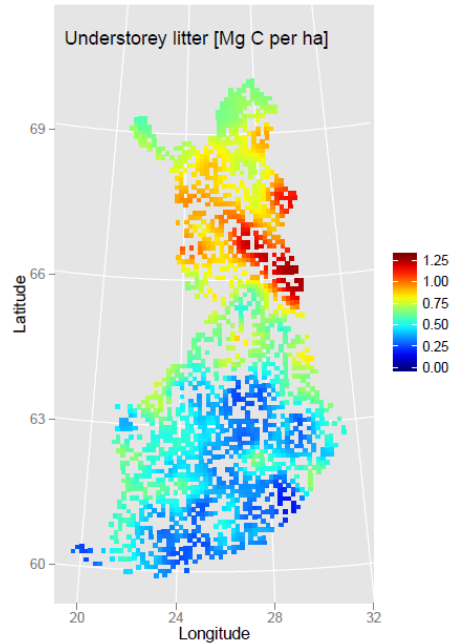
- **NFI9 (national forest inventory) stem volume maps by species based on kriging methods (Tomppo et al. 2011), biomass models and litter turnover rates**
- **Updated understorey models (coverage ~ biomass) for litter input estimation, and application with 1995 data (permanent sample plots)**
- **Regional litter input from natural mortality and harvesting residues**
- **10\*10km<sup>2</sup> FMI grid for weather data**
- **Yasso07- & ROMUL models and Biosoil data on soil carbon (n=521)**

Tomppo, E., Heikkinen, J., Henttonen, H.M., Ihalainen, A., Katila, M., Mäkelä, H., Tuomainen, T. & Vainikainen, N. 2011. Designing and conducting a forest inventory - case: 9th National Forest Inventory of Finland. Springer, Managing Forest Ecosystems 21. 270 p.

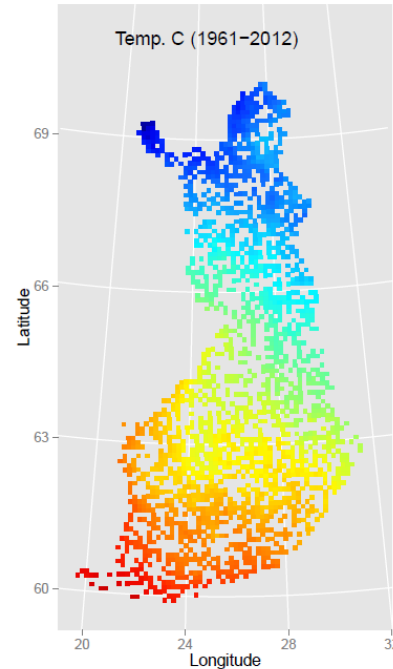
# Material and methods



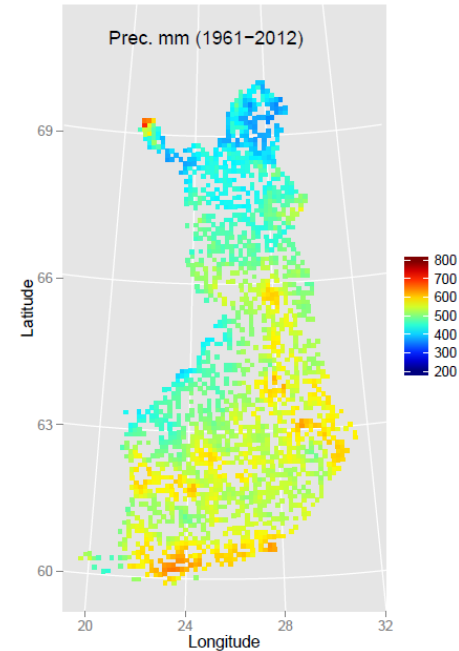
**Total litter**  
**[0-4 Mg C per ha]**



**Understorey litter**  
**[0-1.25 Mg C per ha]**



**Mean temperature**  
**[-4 – 7 Celsius]**



**Precipitation**  
**[200 – 800 mm]**

# Material and methods – ROMUL

- Developed by Oleg Chertov and Alexander Komarov (and others)
- Decomposition of separate cohorts based on litter origins
- Decomposition driven by N and ash content, as well as daily/monthly temperature and soil moisture
- Impact of volumetric soil water content to decomposition by Linkosalo et al. (2013)

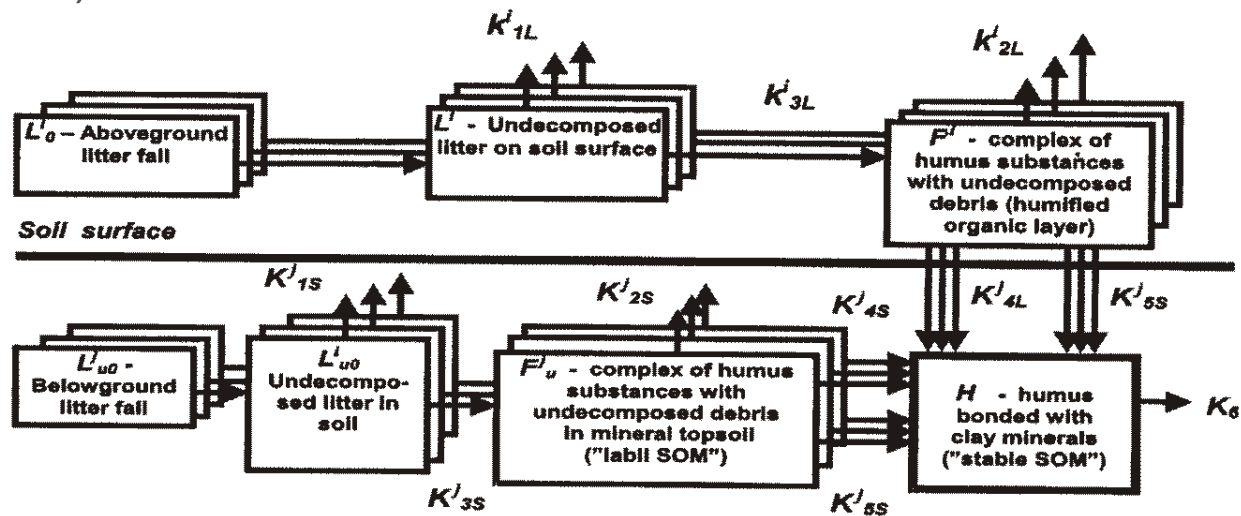
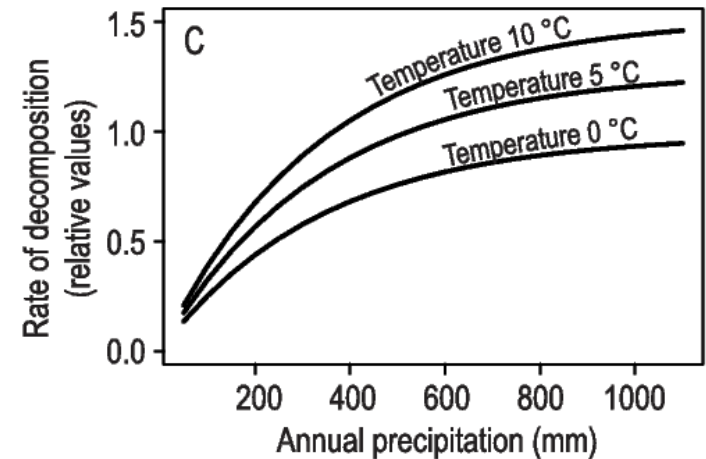
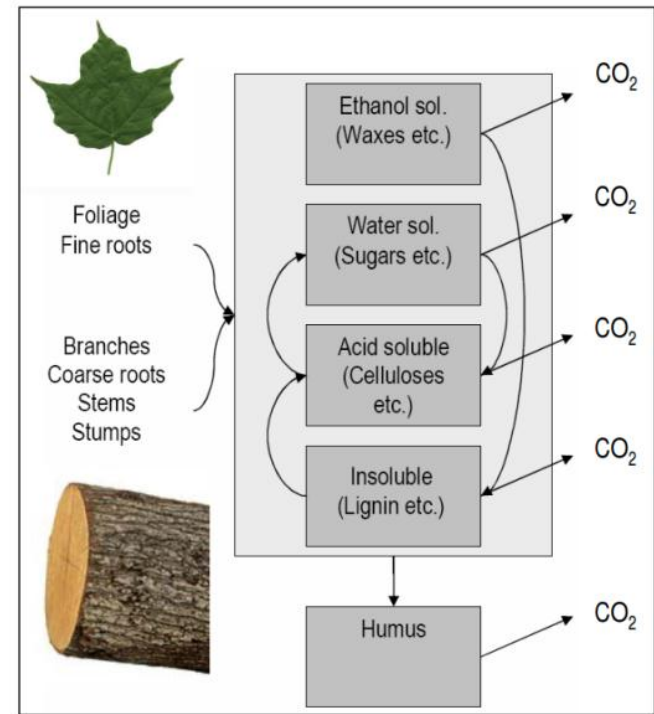


Fig. 1. Flow-chart of ROMUL model.

- Chertov, O. G., et al. "ROMUL—a model of forest soil organic matter dynamics as a substantial tool for forest ecosystem modeling." *Ecological Modelling* 138.1 (2001): 289-308.
- Linkosalo, Tapio, Pasi Kolari, and Jukka Pumpanen. "New decomposition rate functions based on volumetric soil water content for the ROMUL soil organic matter dynamics model." *Ecological Modelling* 263 (2013): 109-118.

# Material and methods – Yasso07

- Developed by Jari Liski and others (Tuomi et al. 2011)
- Markov chain Monte Carlo → uncertainty estimates
- Decomposition rates (5), Carbon fluxes between the pools (13), Climate effects (3) and Woody litter decomposition (3)
- Driven by litter quantity, litter quality, temperature and precipitation
- All transfers between boxes are possible, only significant ones are included (based on MCMC)



• Tuomi, M., Rasinmäki, J., Repo, A., Vanhala, P. & Liski, J. 2011. Soil carbon model Yasso07 graphical user interface. Environmental Modelling and Software 26 (11): 1358-1362.

## Material and methods – soil models

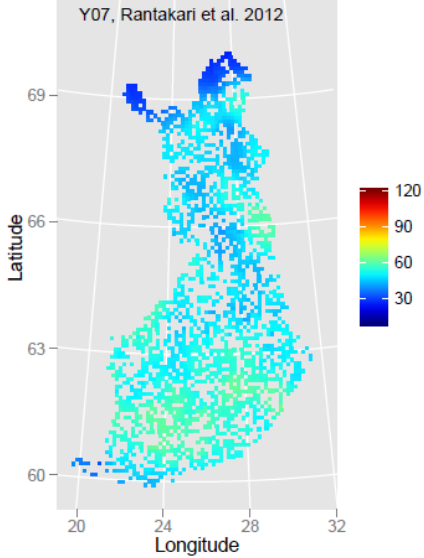
We applied 6 different variants of soil models

1. **Yasso07 with Rantakari et al. 2012** parameters (Scandinavian data)
2. **Yasso07 with Tuomi et al. 2011** parameters (Global data)
3. Yasso07 with Rantakari et al. 2012 parameters, **without understorey vegetation**
4. Yasso07 with Tuomi et al. 2011 parameters, **without understorey vegetation**
5. **ROMUL** models with **constant soil water holding capacity**
6. **ROMUL** models with **variable soil water holding capacity**
  - SWHC based digital soil map (water that is available for plants)

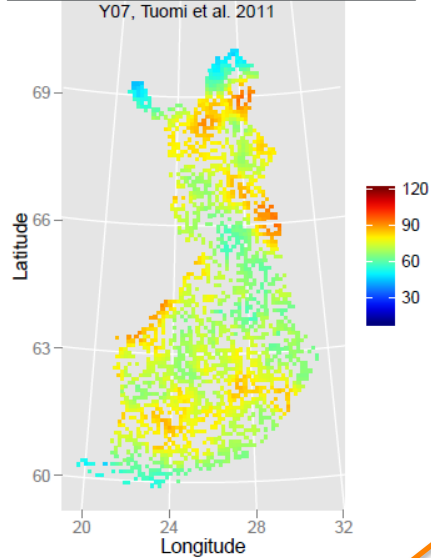


# Results – soil carbon maps

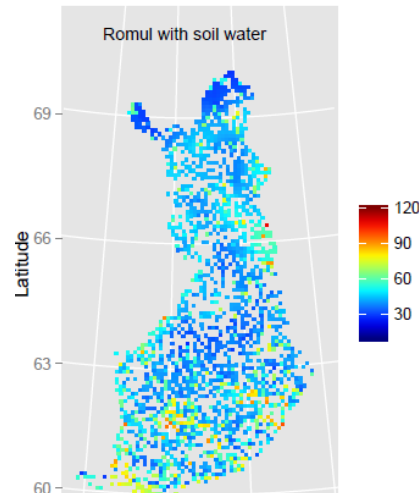
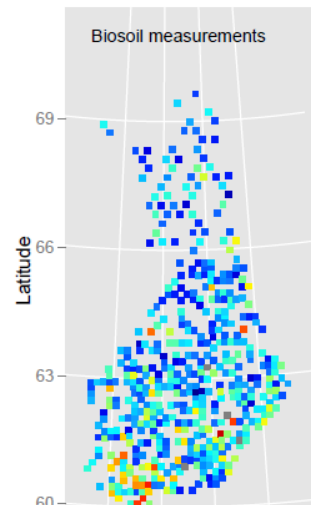
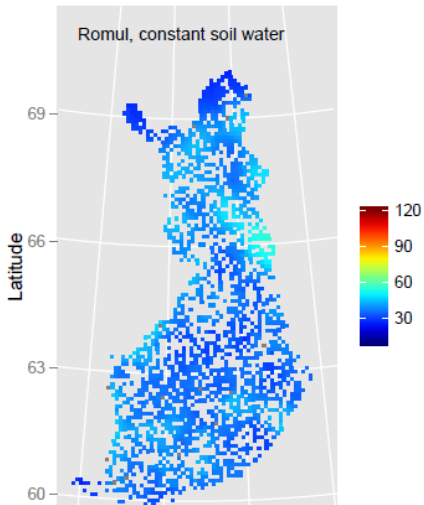
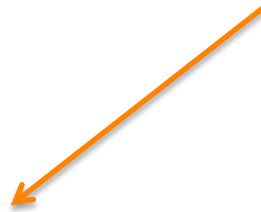
**Y07, scand. data**



**Y07, global data**



**Biosoil data, soil C measurements (n=521)**



ronvarakeskus

**ROMUL without soil water**

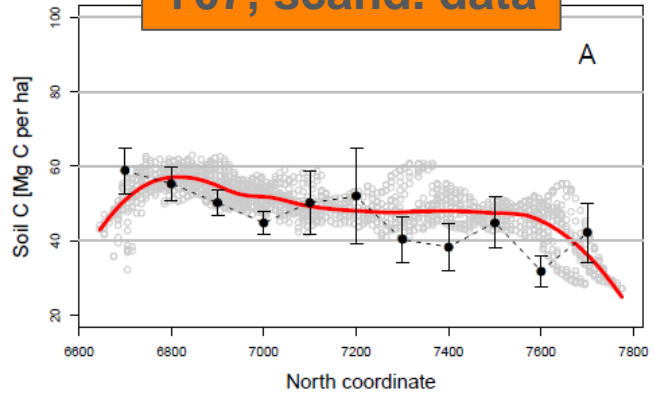
**ROMUL with soil water**

# Results – soil carbon by 11 Latitude bands

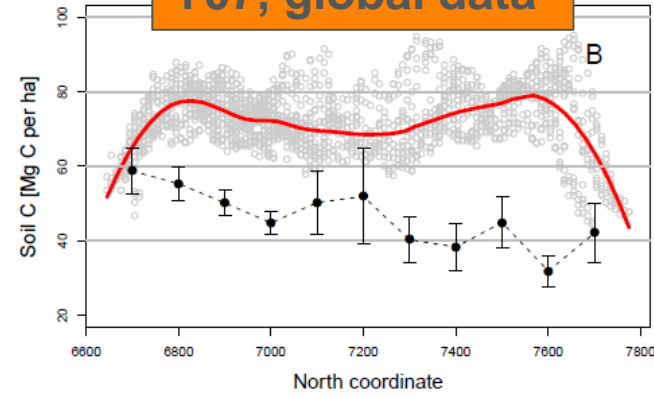
- Grey dots are model estimates
- Red line = mean of model estimates
- Black dots are biosoil means for soil carbon stock

Soil C Mg per ha ↑

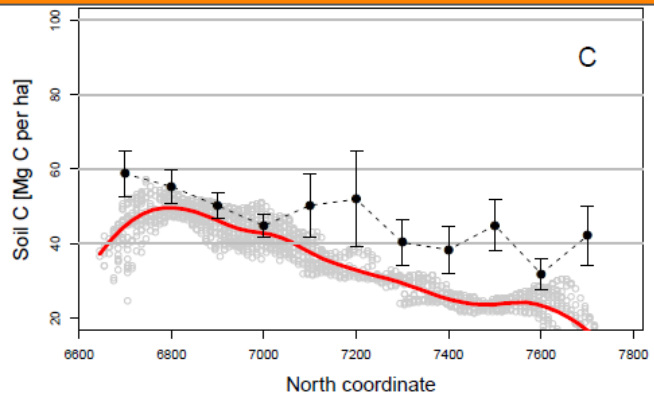
**Y07, scand. data**



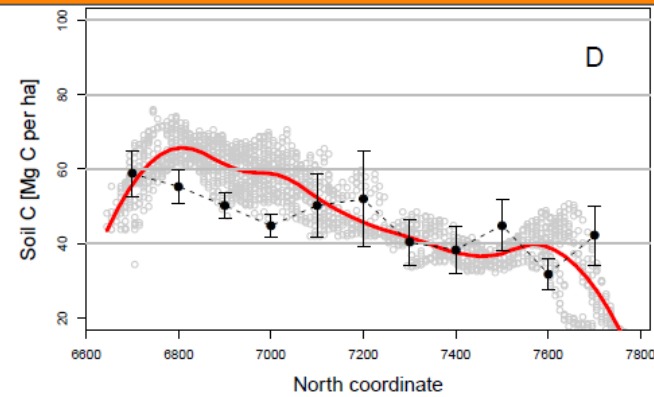
**Y07, global data**



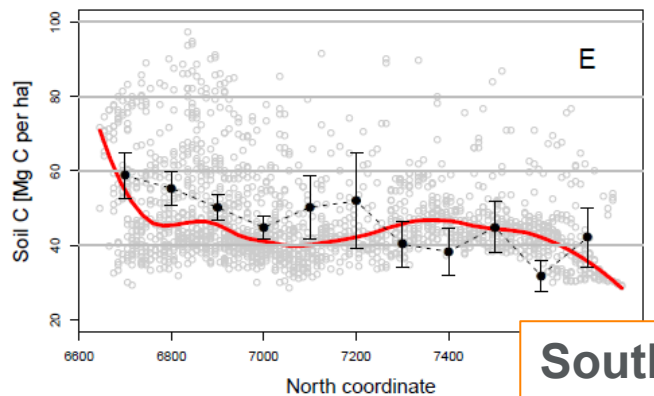
**Y07, scand. data without und**



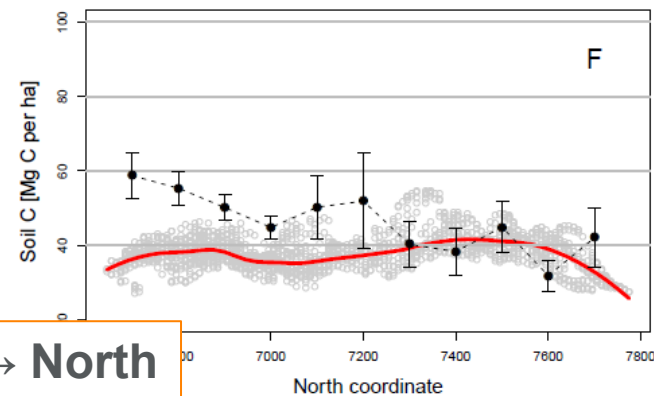
**Y07, global data without und.**



**ROMUL with soil water**



**ROMUL without soil water**

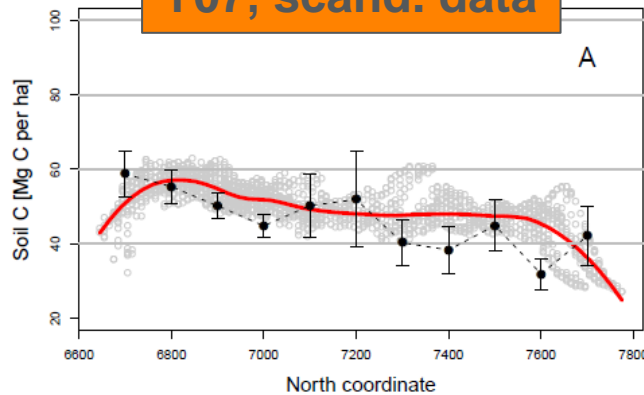


**South → North**

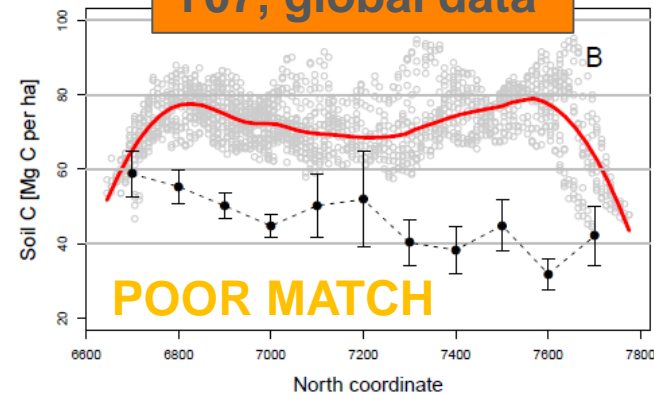
# Results – soil carbon by 11 Latitude bands

- Grey dots are model estimates
- Red line = mean of model estimates
- Black dots are biosoil means for soil carbon stock
- Yasso07, Tuomi et al. 2011 fails (B)
- ROMUL with constant soil water fails (F)
- ROMUL with varying soil water works fine south (E)

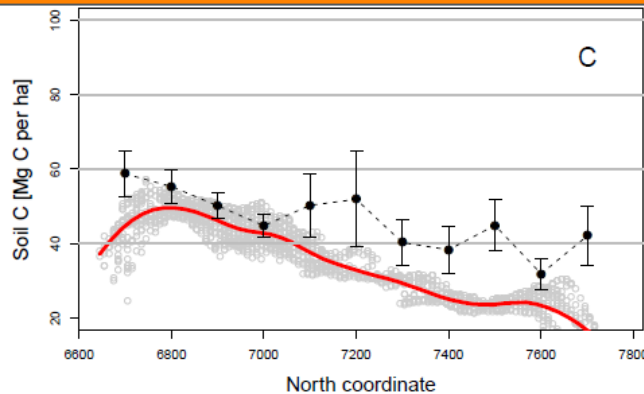
Y07, scand. data



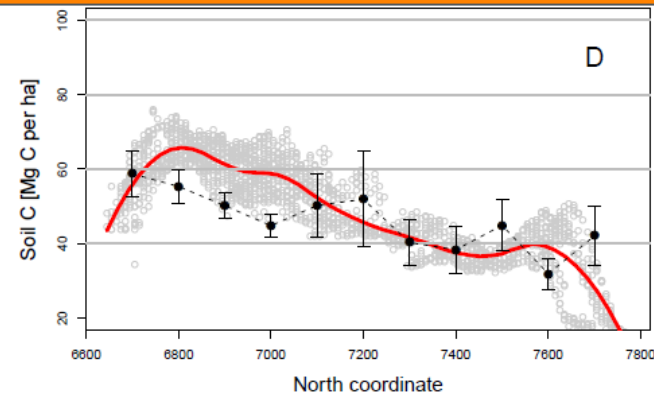
Y07, global data



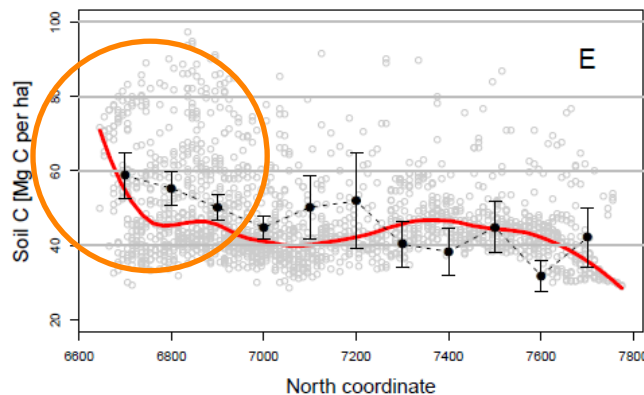
Y07, scand. data without und



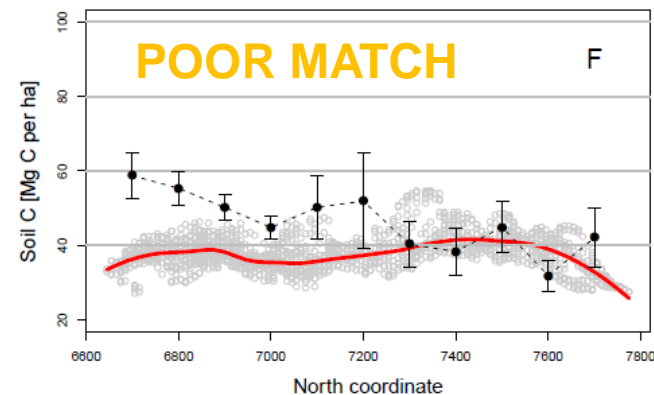
Y07, global data without und.



ROMUL with soil water



ROMUL without soil water



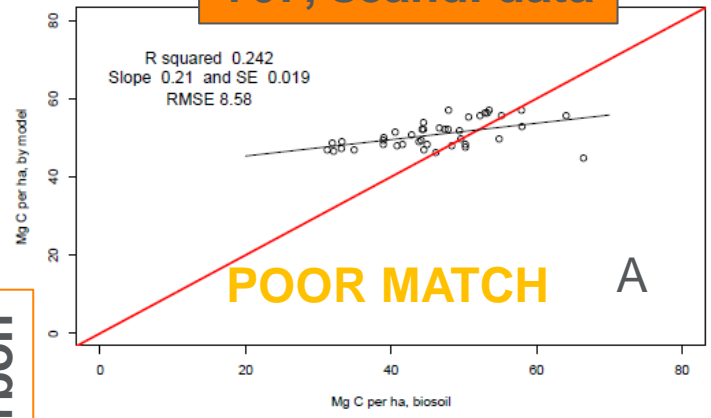
# Results – soil carbon by ~40 Latitude bands, one-to-one

Modeled carbon

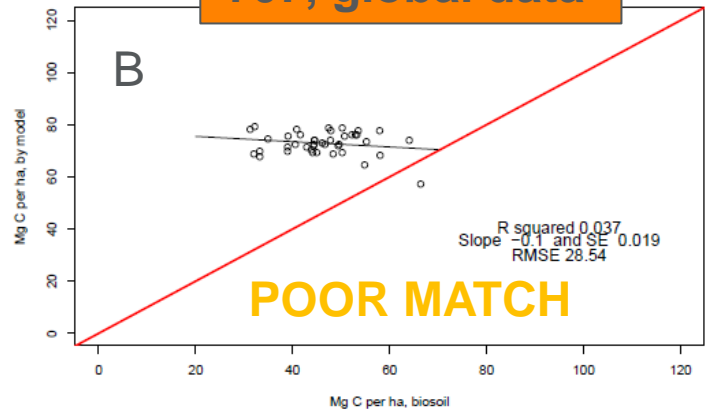
- Yasso07, model without understorey vegetation has best slopes (C & D)

- ROMUL with soil water holding capacity data has the lowest RMSE (E)

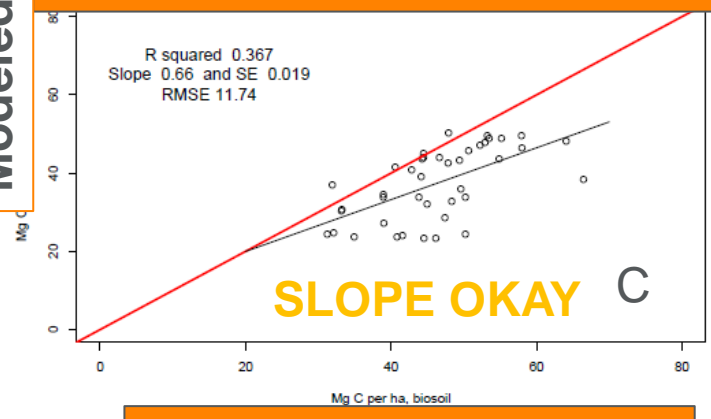
**Y07, scand. data**



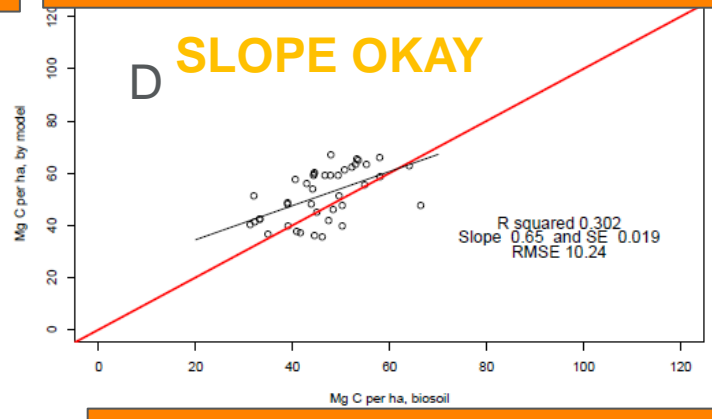
**Y07, global data**



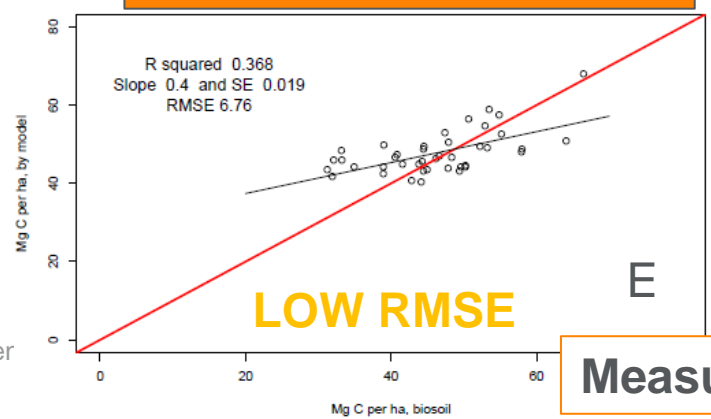
**Y07, scand. data without und**



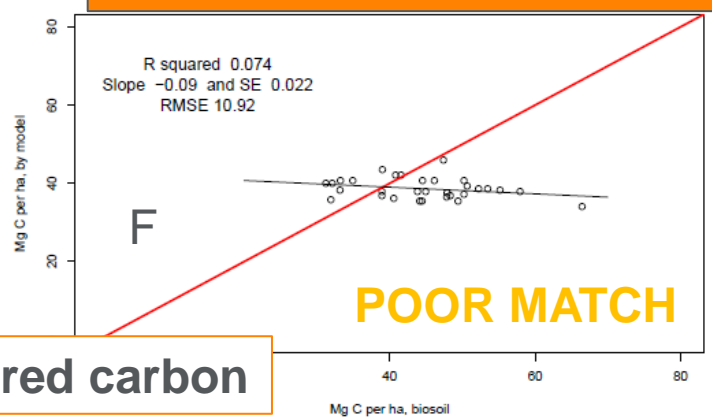
**Y07, global data without und**



**ROMUL with soil water**



**ROMUL without soil water**



**Measured carbon**

# Results & Conclusions

- **Best results** against latitudinal trends were obtained with Yasso07 model **when understorey litter was excluded**
  - Likely understorey litter input has been overlooked when Yasso07 was been parametrised, especially in Northern latitudes
  - More studies needed for belowground production for understorey vegetation
- **Soil water holding capacity data improved ROMUL performance**, especially in South
  - It seems that decomposition slows down especially in Southern Finland on haplic arenosols soils with low water holding capacity
- Yasso07 with local parametrisation (Rantakari et al. 2012) was superior when estimating soil carbon stocks on Finnish uplands compared to global parametrisation (Tuomi et al. 2011)

# Take home messages

Why soil C stocks by models do not match with measurements ?

- Biased dependency between climate and decomposition (especially with slow/old carbon)
- Biased litter input - soil carbon stock pairs when models have calibrated (e.g. underestimation of undertorey vegetation input in North)
- Soil texture affects carbon stock

# Thank you !

aleksi.lehtonen@luke.fi

[www.luke.fi](http://www.luke.fi)

Natural Resources Institute Finland