

The need of the European Environment Agency for forest data - experiences of cooperation with the NFIs and some reflections on the future.

Tor-Bjorn Larsson, EEA



The European Environment Agency is the EU body dedicated to providing sound, independent information on the environment



*EEA main office
Copenhagen*

We are a main information source for policy-makers, and also the general public

www.eea.europa.eu

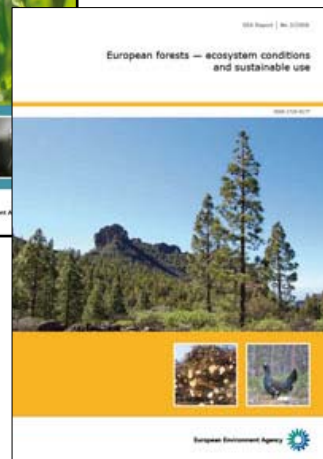
32 EEA member and 7 collaborating countries



EEA products



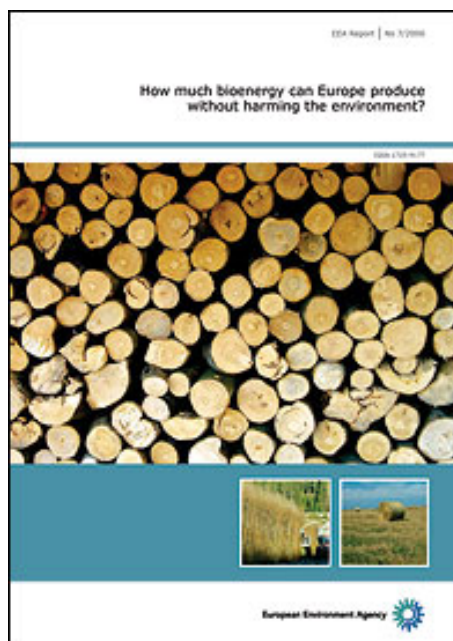
The European environment - State and outlook 2005



European forests - ecosystem conditions and sustainable use
May 2008

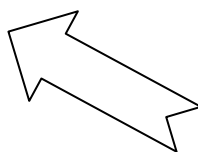


European Forest Types
2006-07



How much bioenergy can Europe produce without harming the environment?

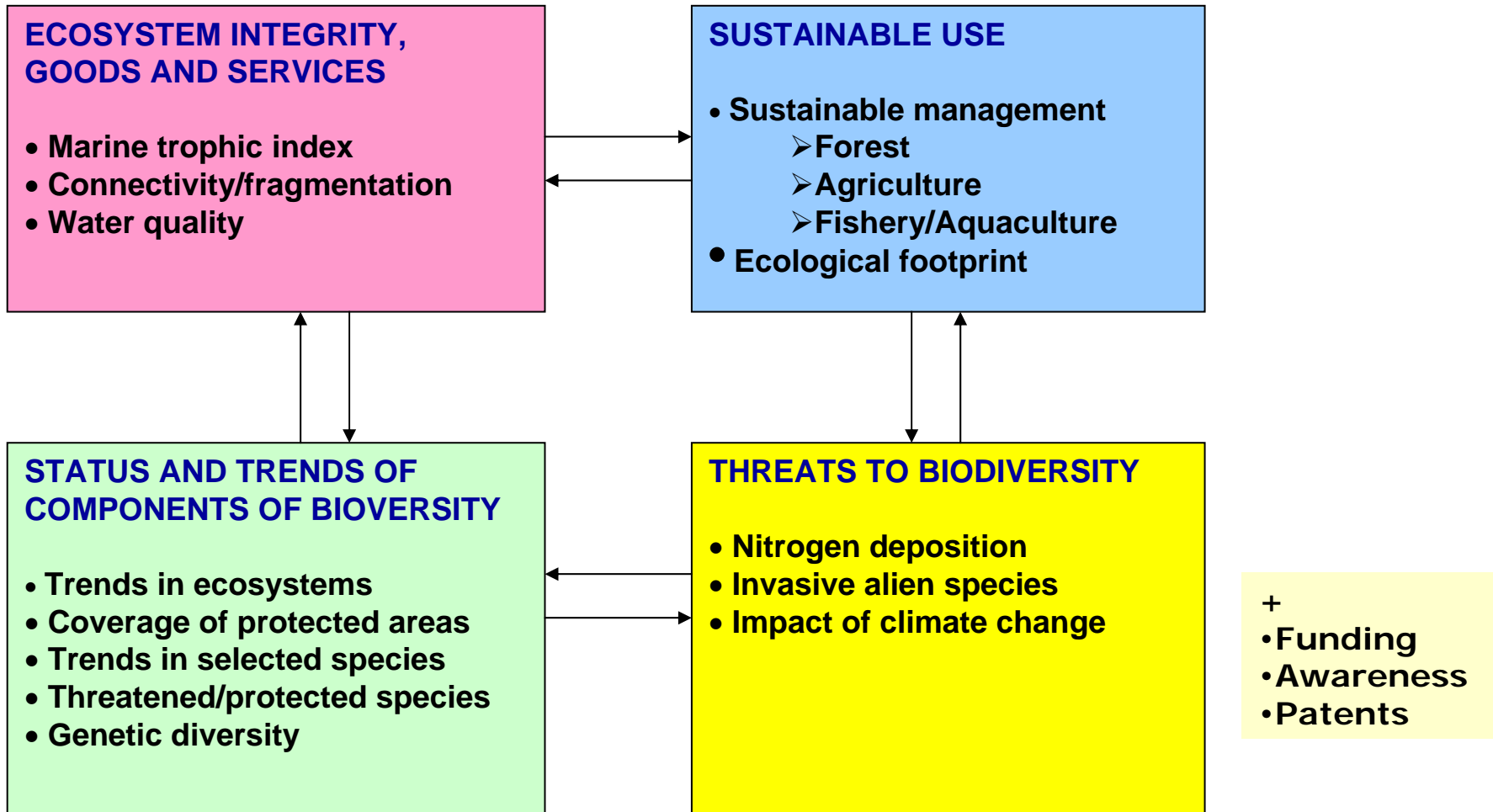
EEA Report No 7/2006



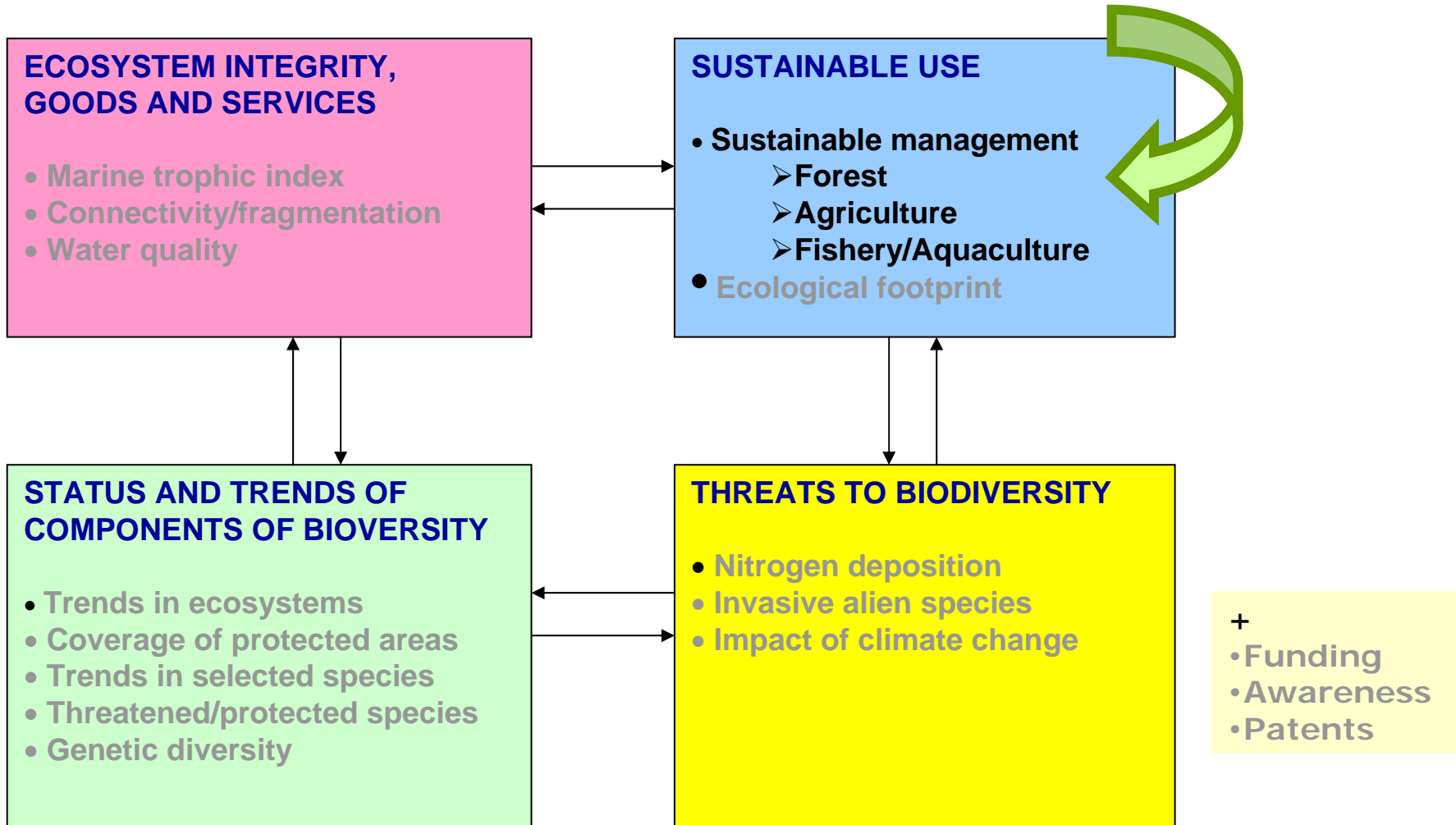
Ecological constraints for utilisation of forest biomass

Marcus Lindner *et al.*
European Forest Institute

Framework to assess the 2010 Biodiversity target

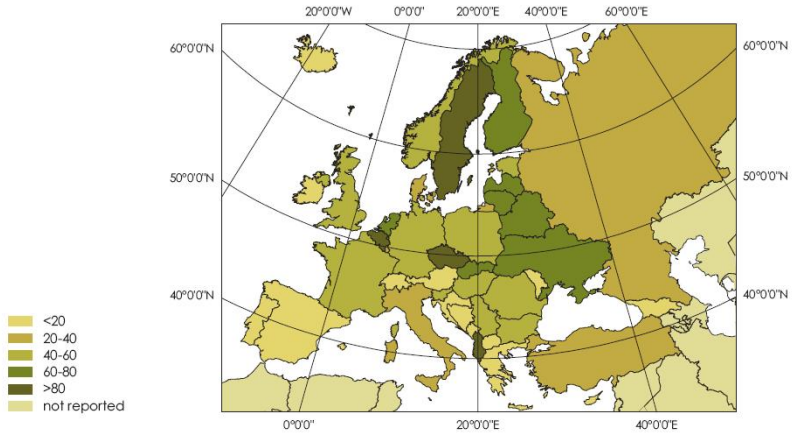
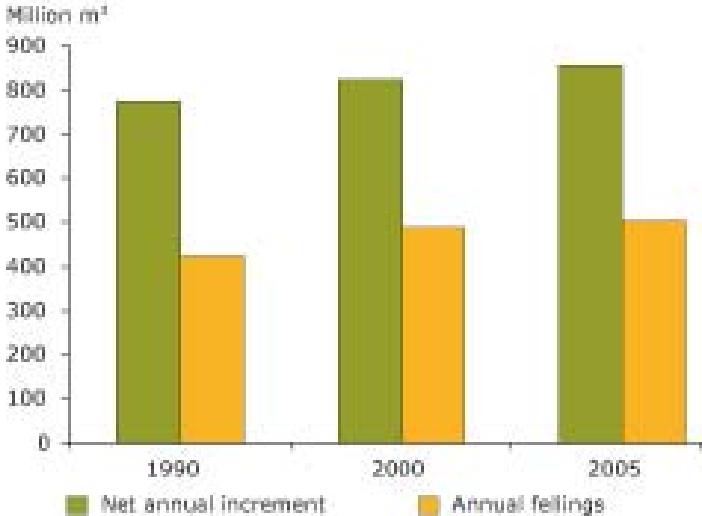


Framework to assess the 2010 Biodiversity target



Sustainable forest management

A. Fellings in relation to increment and growing stock:



State of Europe's Forest 2007

MCPFE & UNECE/FAO

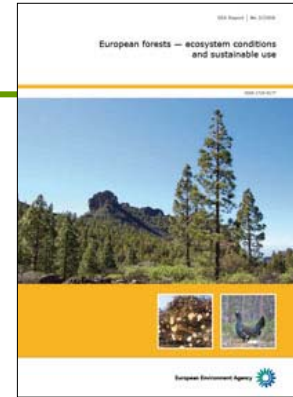
Sustainable forest management

B. Dead wood:

MCPFE 2007 data not very consistent nor show any trend.

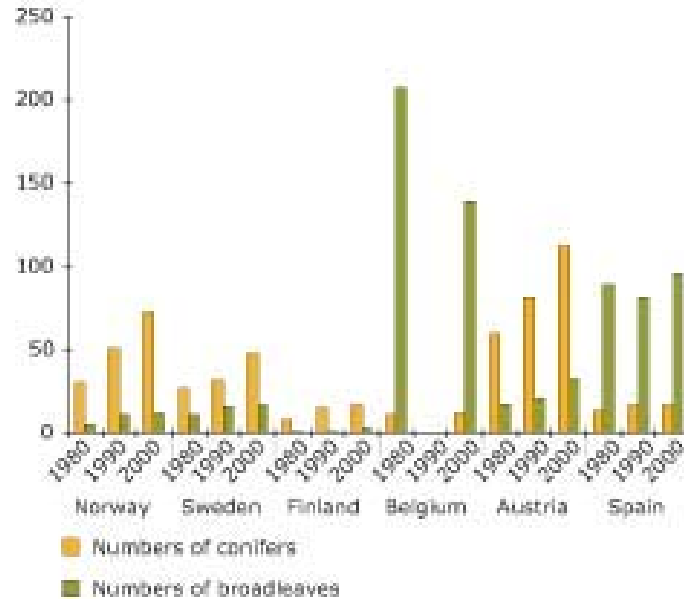
Allow the conclusion that the amount of deadwood seems rather low.

Contributions directly from ENFIN/NFIs

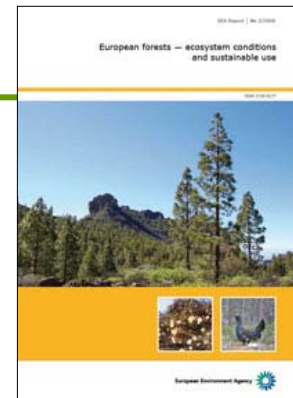


Coarse trees

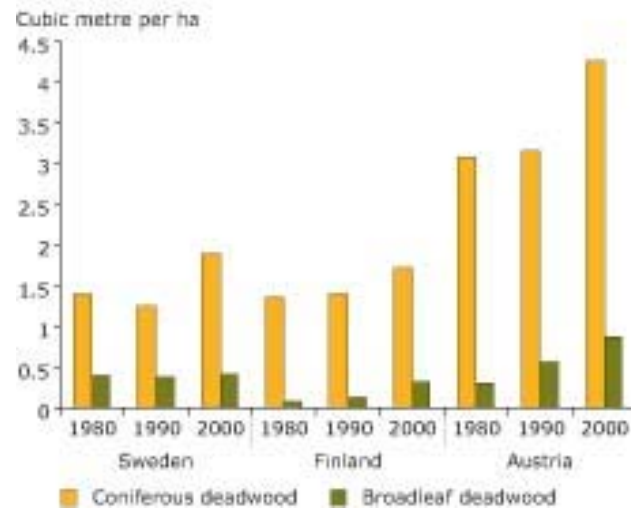
Number of coarse trees per 100 ha

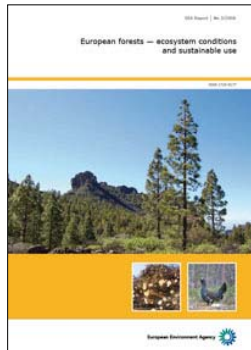


Contributions directly from ENFIN/NFIs



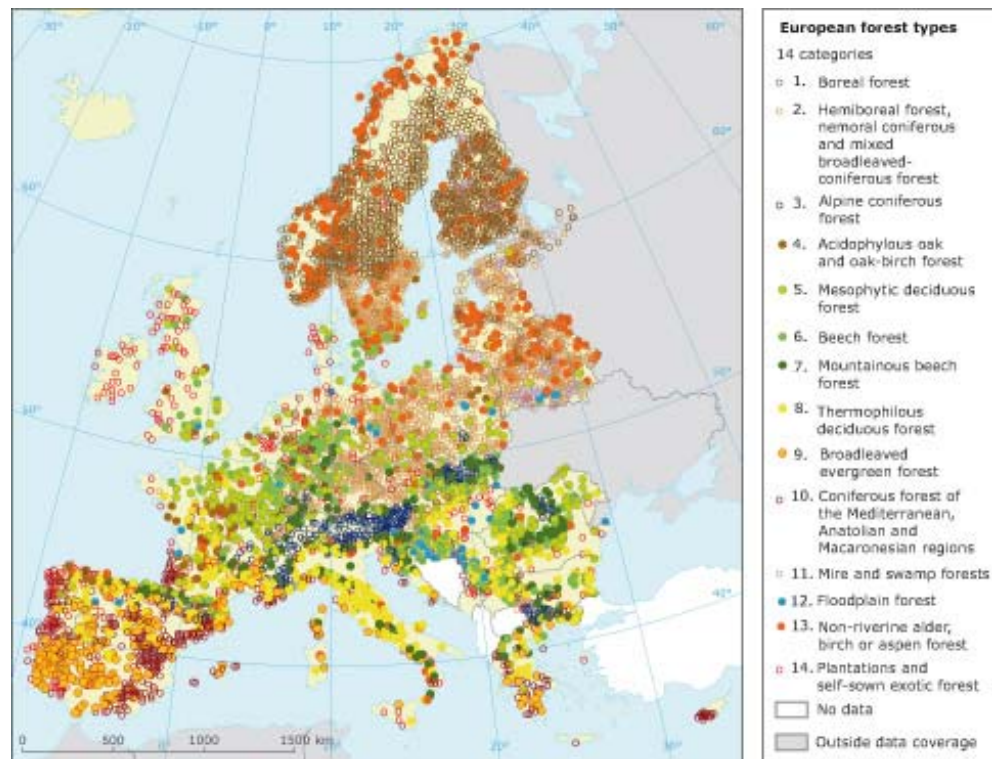
Deadwood





European Forest Types

- Improved framework for ecological assessments of European forests
- 14 main categories
- Proposed for MCPFE reporting



The European Forest Types:



Boreal forest (1)



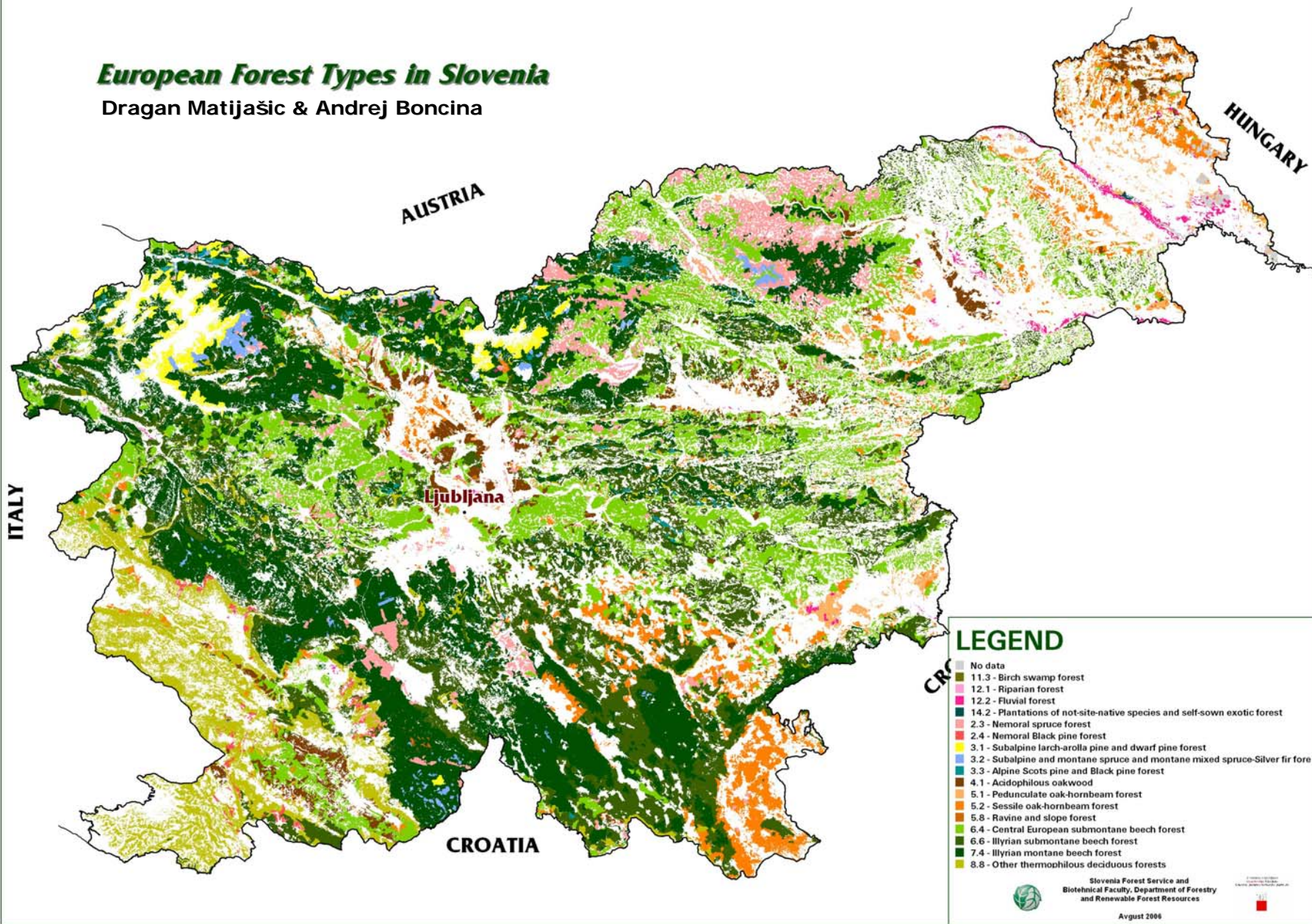
Plantation forest (14)

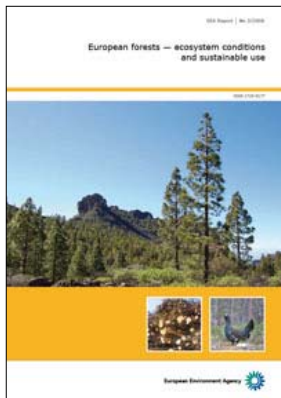
1. Boreal forest
2. Hemiboreal forest and nemoral coniferous and mixed broadleaved-coniferous forest
3. Alpine coniferous forest
4. Acidophyllous oak and oak-birch forest
5. Mesophytic deciduous forest
6. Beech forest
7. Montane beech forest
8. Thermophilous deciduous forest
9. Broadleaved evergreen forest
10. Coniferous forest of the Mediterranean, Anatolian and Macaronesian regions
11. Mire and swamp forests
12. Floodplain forest
13. Non-riverine alder, birch or aspen forest
14. Plantations and self-sown exotic forest



European Forest Types in Slovenia

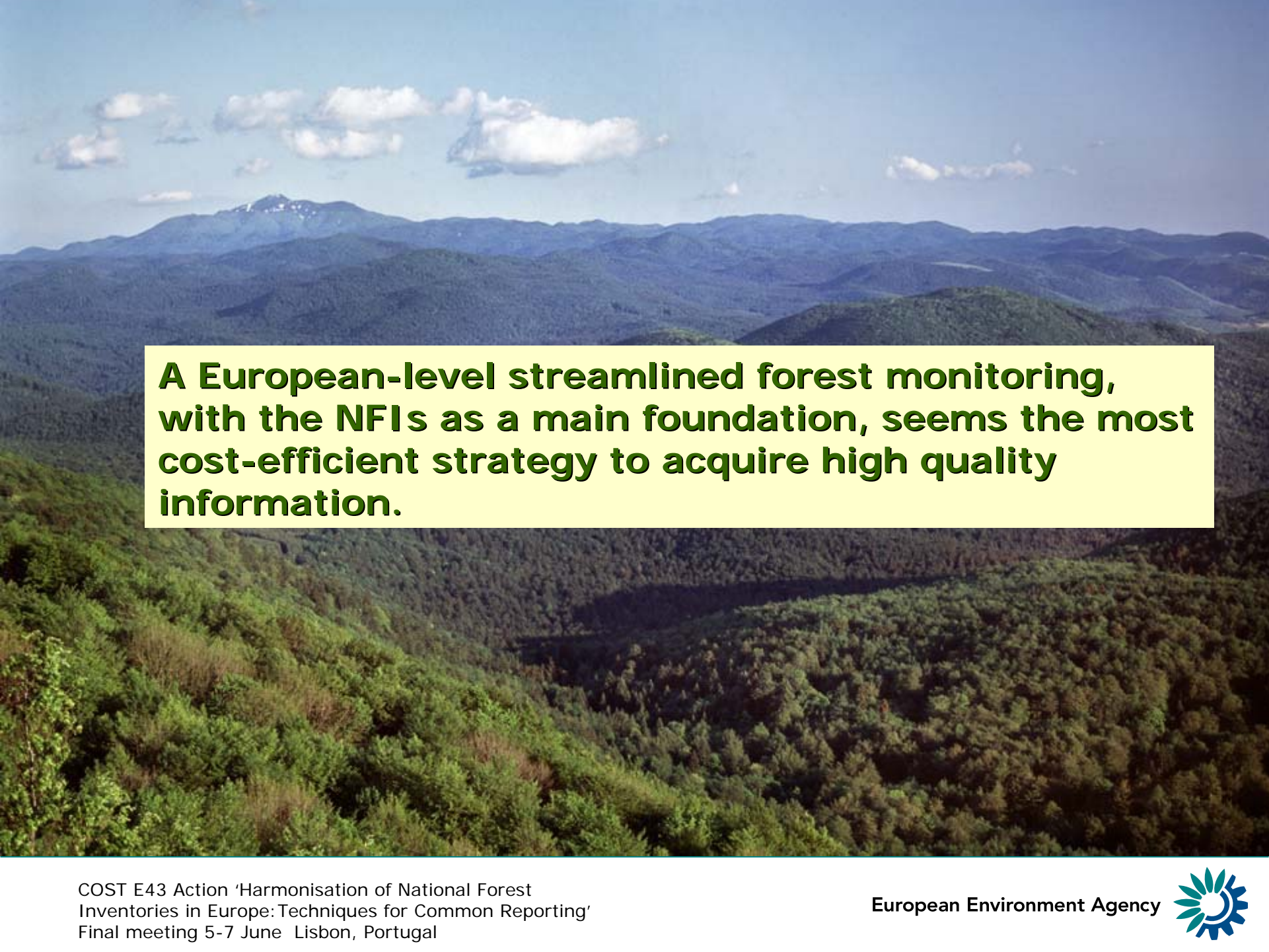
Dragan Matijašič & Andrej Boncina





Future challenges:

- ✳ **European forest management will develop further towards multi-functionality.**
- ✳ **Production of wood and other traditional resources will have to be balanced against all kinds of goods and services from the forest ecosystems.**
- ✳ **Data on wider aspects of forest ecosystems and forest biodiversity is needed.**
- ✳ **To capture the variation in European forests data should be collected according to the European Forest Types.**
- ✳ **In particular information on biodiversity composition (species, communities) as well as on ecological services (e.g. water resources and quality, carbon sequestration) needs to be strengthened.**



A European-level streamlined forest monitoring, with the NFIs as a main foundation, seems the most cost-efficient strategy to acquire high quality information.



Thank You for Your attention!

